



QUINN DOWNES

Group Company Profile

Welcome to Quinn Downes Group

The Quinn Downes Group is renowned for professionalism, honesty and the successful delivery of a wide variety of projects and services. Established in 1999, the Quinn Downes Group now employs over one hundred staff across two companies. Reliability, trust and support are three of the key reasons why we are the preferred partner for many Irish and international companies.

Our client portfolio is testament to the dedication of our staff and the consistent delivery of exceptional projects through a range of industry sectors. Hard work and honesty are core values central to the Quinn Downes ethos. Coupled with the experience and know-how of our expert team, a winning formula has been achieved.



1999: Quinn Downes Ltd

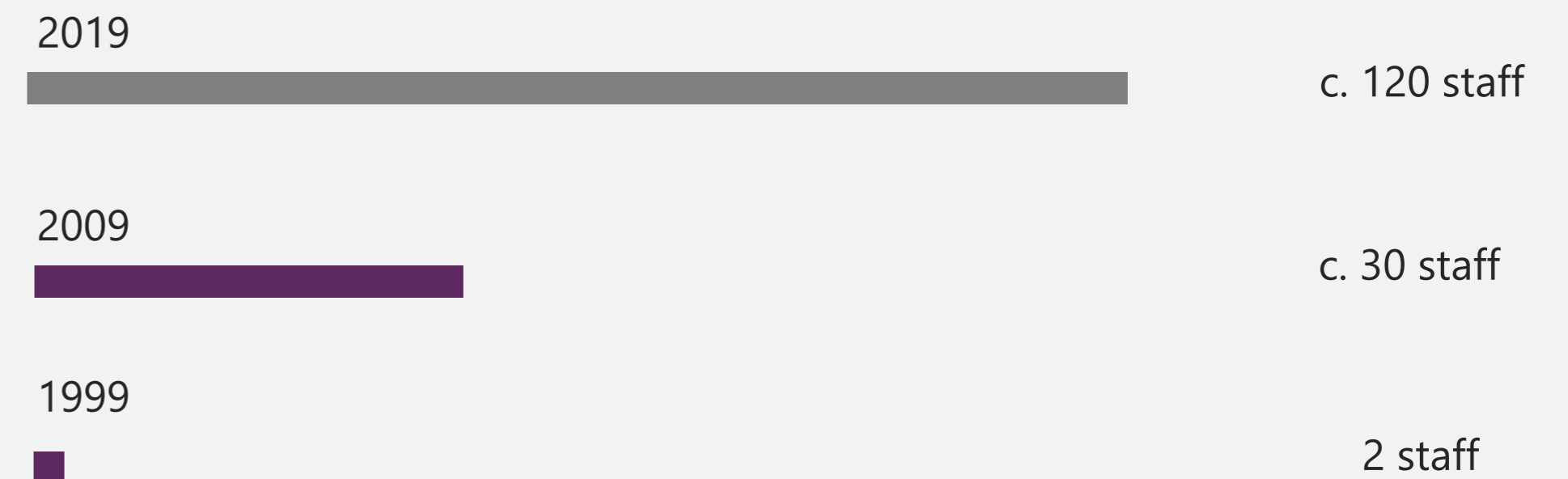


2015: Quinn Downes Group

Annual Turnover



Employees





Company Profile

 NSAI	 HEALTH & SAFETY ISO 45001:2018 NSAI Certified	 QUALITY ISO 9001:2015 NSAI Certified	 ENVIRONMENT ISO 14001:2015 NSAI Certified
---	---	---	--

TABLE OF CONTENTS

- Our Capabilities
- Our Services
- Sectors
- Company Structure
- Our Commitment to our Clients
- Healthcare
- Education
- Corporate
- Public
- Retail
- Food & Pharma
- Recreational
- Vocational
- Residential
- Gallery
- Contact Us

Our Capabilities

- Project Management
- Design and Build
- Budget Estimates
- Engineering
- Co-ordination
- Procurement
- Value Engineering
- Commissioning
- Operation & Maintenance
- Inspections & Snagging
- Rapid Build
- Term Service Contracts
- Turnkey Projects
- LEED & BREEAM Standards





Our Services

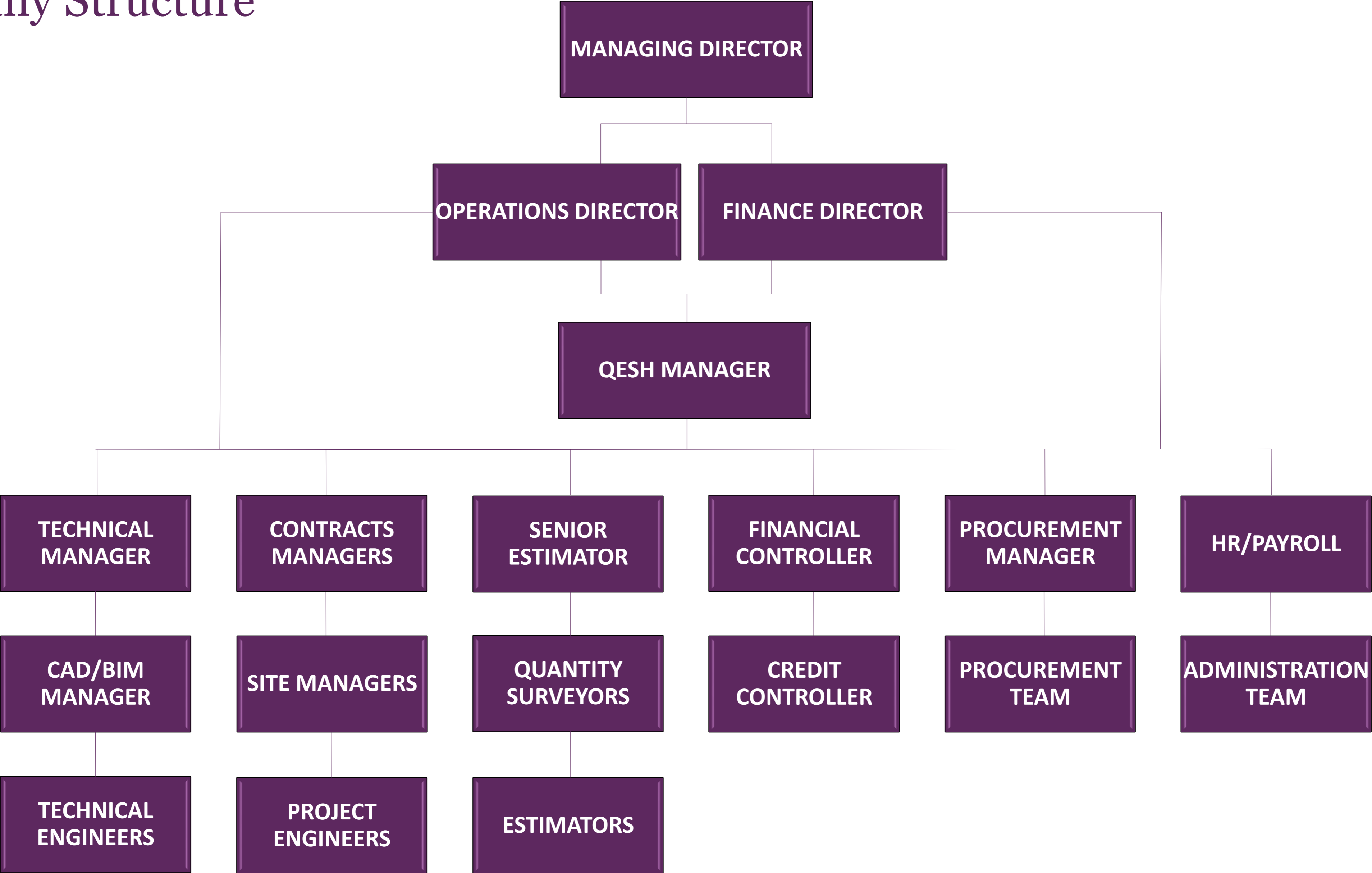
- Heating Systems
- Ventilation & Air Conditioning Systems
- Kitchen Ventilation Systems
- Chilled Water Systems & Chiller Replacements
- Fan Coil Unit & Chilled Beam Installations
- Specialist Data Centre Air Conditioning Systems
- Building Energy Management Systems & Automated Controls
- Water Services including Rainwater Harvesting & Solar Hot Water
- Natural Gas Services Installation including gas detection systems
- Soils & Waste Installations including H.D.P.E. Systems
- Fire Protections Services including Specialist ICT Suppression Systems
- Complete Design, Build & Commissioning Service



Sectors

- Healthcare
- Education
- Corporate
- Public Sector
- Retail
- Food & Pharma
- Recreational
- Vocational
- Residential

Company Structure





Our Commitment to our Clients

- Provide a professional service.
- Promote a safe working environment.
- Carry out projects using the most up to date methodology & industry-based knowledge.
- Continually improve the quality of the products & services we provide.
- Ensure all staff are trained and fully compliant with H&S regulations.
- Actively encourage all staff to progress with their training and education.

HEALTHCARE

Design Input

- Acute Psychiatric Facilities - Beaumont Hospital
- Acute Psychiatric Facilities - Our Lady of Lourdes Hospital
- M.R.I. Facility Beaumont Hospital
- Orthopaedic Theatre & Cath Lab – CHI, Crumlin
- 60 Bed Acute Unit – University Hospital Limerick

Hospital Departments

- Cath Labs
- Orthopaedic Theatres
- MRI Rooms
- HDUs
- Medical Isolation Rooms
- Endoscopy
- Radiology
- A&E
- Blood Labs
- Mortuaries



Sports Surgery Clinic, Santry



Crumlin Cath Lab

- Beaumont Hospital
- Royal College of Surgeons
- Mater Misericordiae Hospital
- St James Hospital
- St Vincent's
- Connolly Hospital
- Our Lady's Children's Hospital Crumlin
- Tallaght University Hospital
- University Hospital Limerick
- Our Lady of Lourdes, Drogheda
- National Maternity Hospital
- Bon Secours
- University Hospital Galway
- Sports Surgery Clinic
- Midland Regional Hospital



Ortho Lab Crumlin



HDU - Beaumont Hospital



Sports Surgery Clinic



St James Hospital



OLOL Hospital Drogheda, APU



Royal College of Surgeons



University Hospital Limerick, 60 Bed Acute Unit



APU, Beaumont Hospital



Tallaght Hospital A&E Dept



National Maternity Hospital

EDUCATION

Dept of Education Summer Works & Rapid Build Programme

- St Brigid's N.S Stillorgan
- Kildress N.S. Rathgar
- Sacred Heart N.S. Clondalkin
- Flemington N.S. Balbriggan
- Marino College

Preferred Contractor

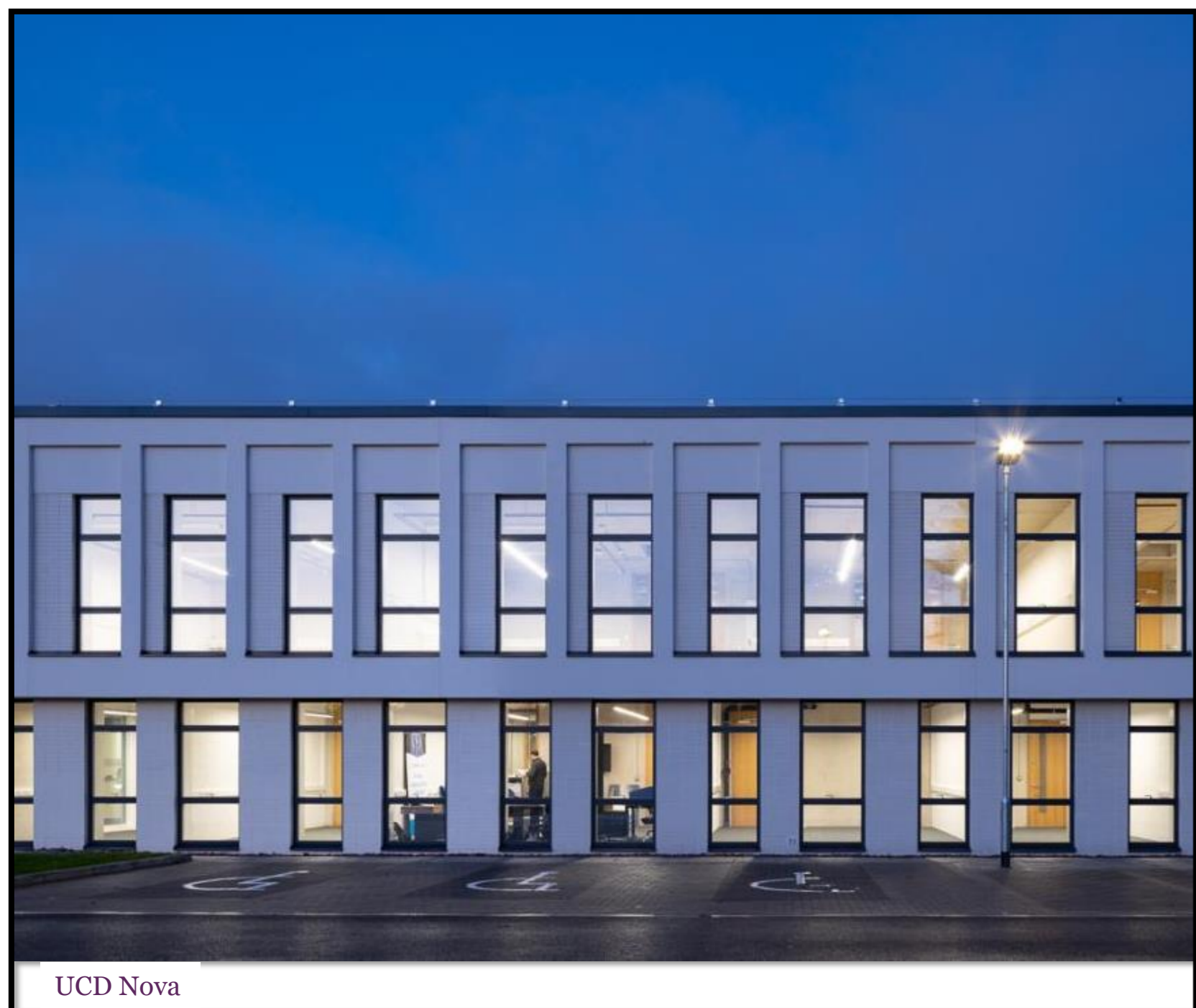
- Radiator & Radiant Panel Heating Systems
- Waste & Rain Water Harvesting Systems
- Complete Water Services
- Natural Gas Systems
- Ventilation Systems
- Wind Catcher Systems



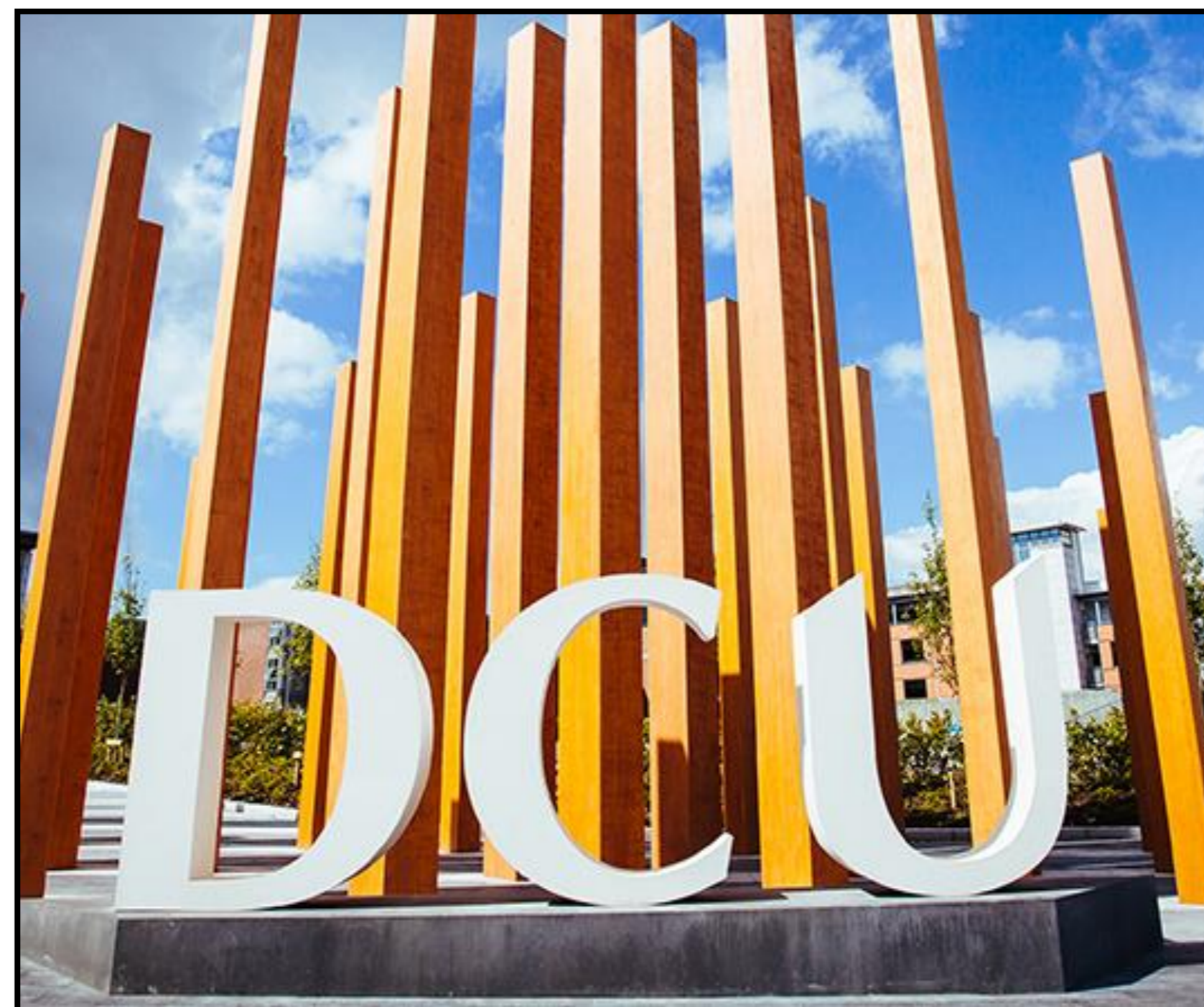
DCU Stokes Building



Trinity College was our first client in this sector, and we have continued to work successfully in the college since 1999. We also have worked extensively in the primary and secondary school sector as the Main Contractor on refurbishment works or in partnership with construction companies on new builds.



UCD Nova



Marino College



UCD Confucius



UCD President's Club



TCD O'Reilly Building



St Finian's N.S.



St Aidan's CBS



St Oliver Plunkett N.S. Navan

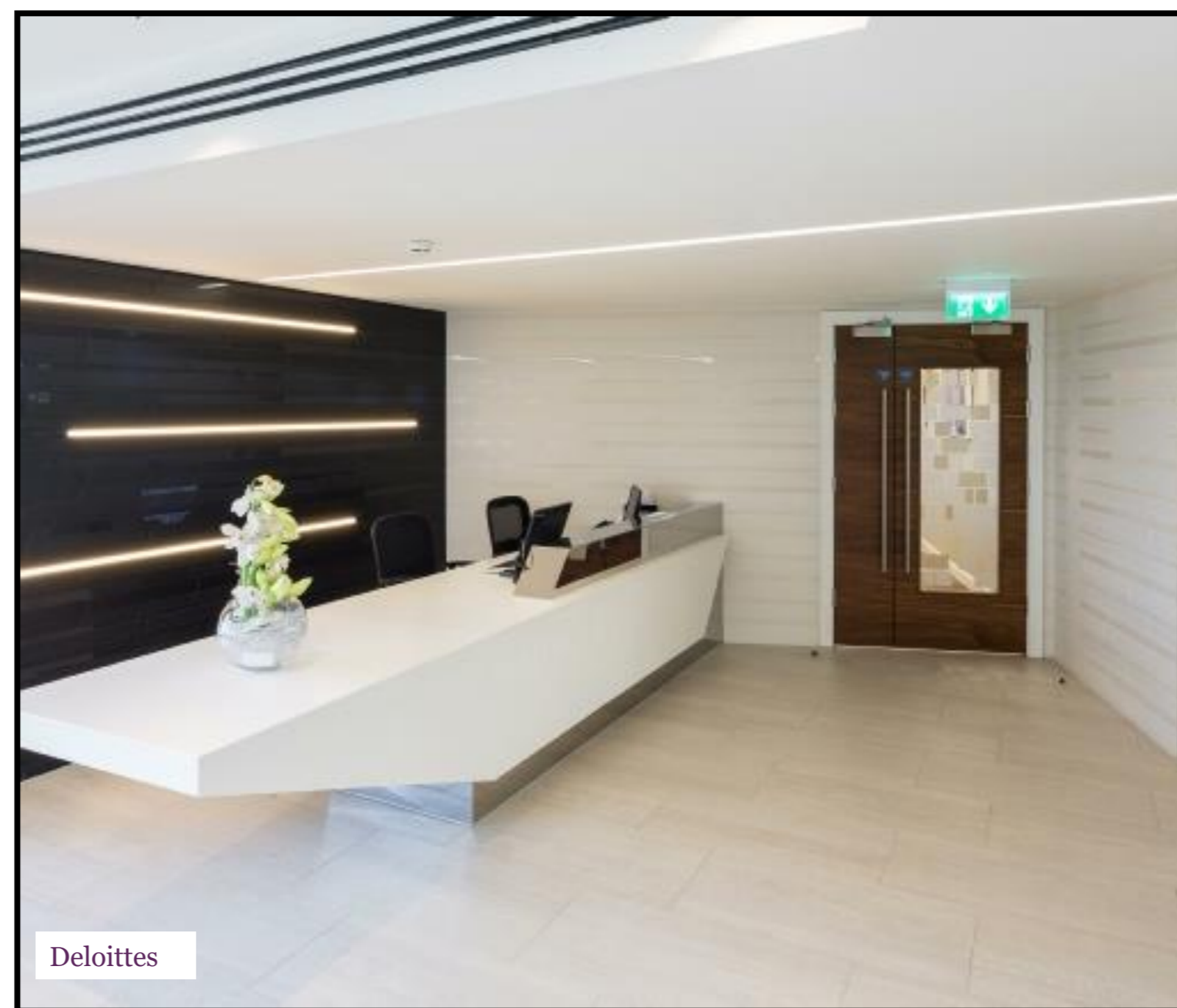
CORPORATE

Quinn Downes have vast experience in providing Mechanical Services Installations for fast track fit-out solutions, shell & core, office fit-outs and design & build solutions nationwide.

Our Service & Maintenance Team offers a complete follow up aftercare solution with 24 hour, 7 days a week, 365 days a year call out service.



The Hive, Sandyford



PUBLIC

Our staff have been Garda Vetted to work in a wide range of locations that are highly sensitive from a security and information viewpoint and are trained to carry out their duties in the Live environment in a manner that causes the least disruption to our clients.

Our Service & Maintenance Team offers a complete follow up aftercare solution with 24 hour, 7 days a week, 365 days a year call out service.



UCD Newman House (MoLI)



Dublin City Council



Dept of Enterprise



ESB



Dept of Defence, The Curragh



Chester Beatty Library



Garda Boat Club

RETAIL

Quinn Downes work directly with clients to design systems which meet the individual requirement of each project. We have also carried out projects while the business continued to trade successfully, thus minimising the amount of downtime for our clients.



St Stephen's Green Shopping Centre



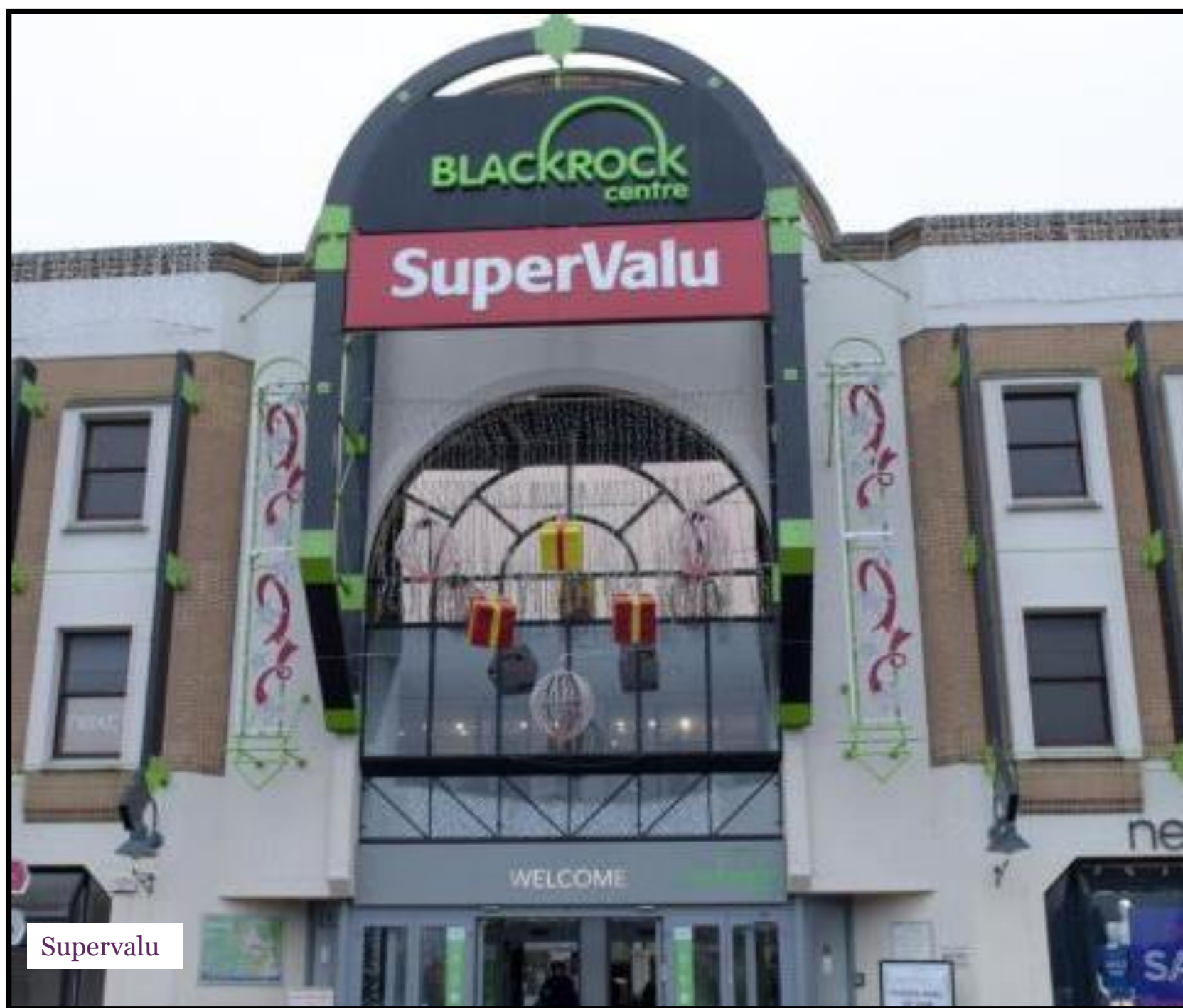
Kildare Village Shopping Outlets



Maxol Ballycoolin



Meadows & Byrne



SuperValu



Homebase



Café Mao, Dundrum Town Centre

FOOD & PHARMA

Quinn Downes have completed a number of high level pharmaceutical projects over the last number of years. We understand the protocols, procedures and expectations required to deliver first class services in this demanding, heavily regulated environment.





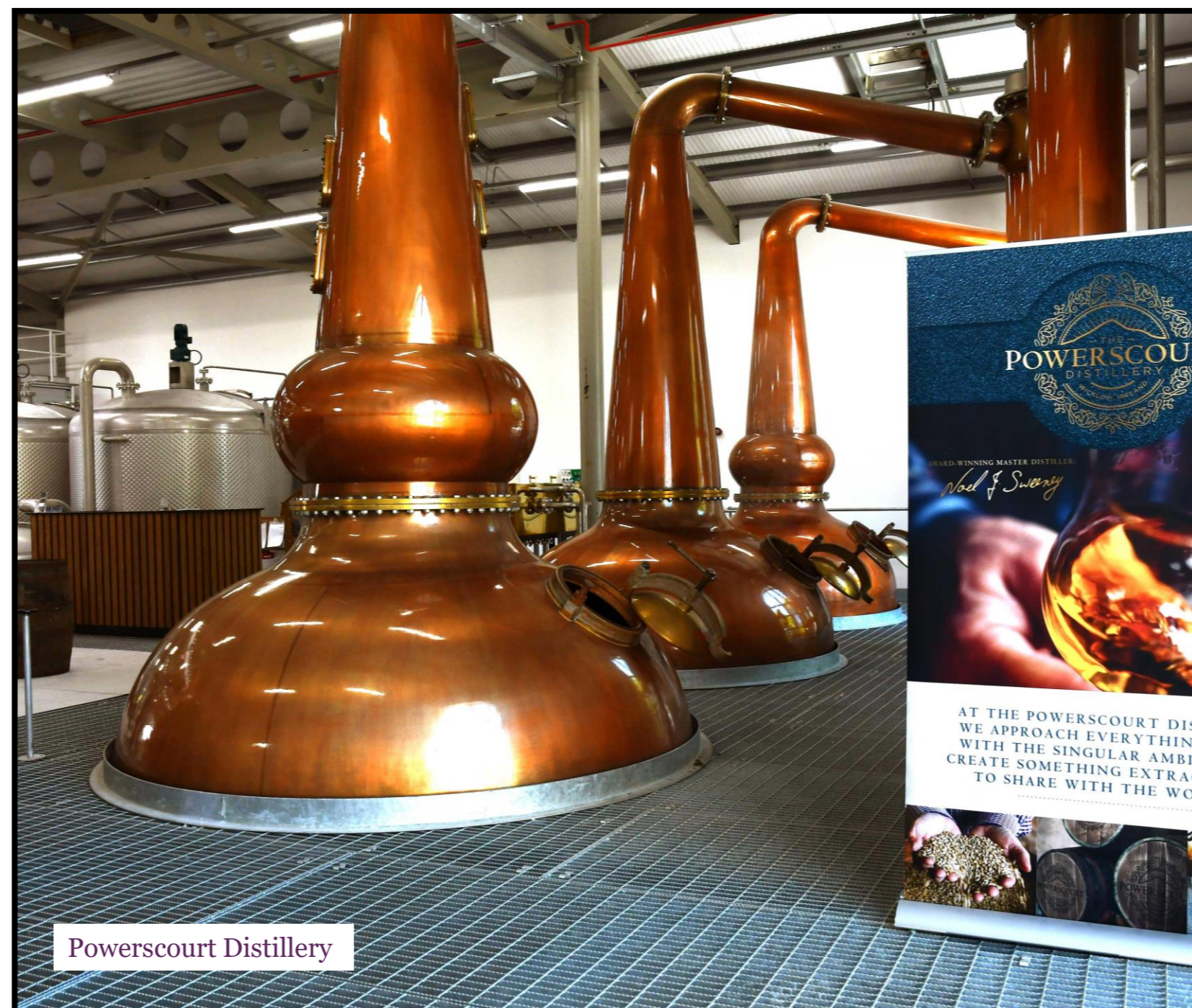
Emeri Nutritional

Food & Pharma



Baxter Healthcare

- HVAC
- Medical Gases
- QBMS & Automatic Controls
- Process Pipework & Compressed Air Services
- Specialist Water Treatment & Waste Systems
- ATEX Dust & Vapour Extract Systems
- Specialist Fire Protection Services



Powerscourt Distillery

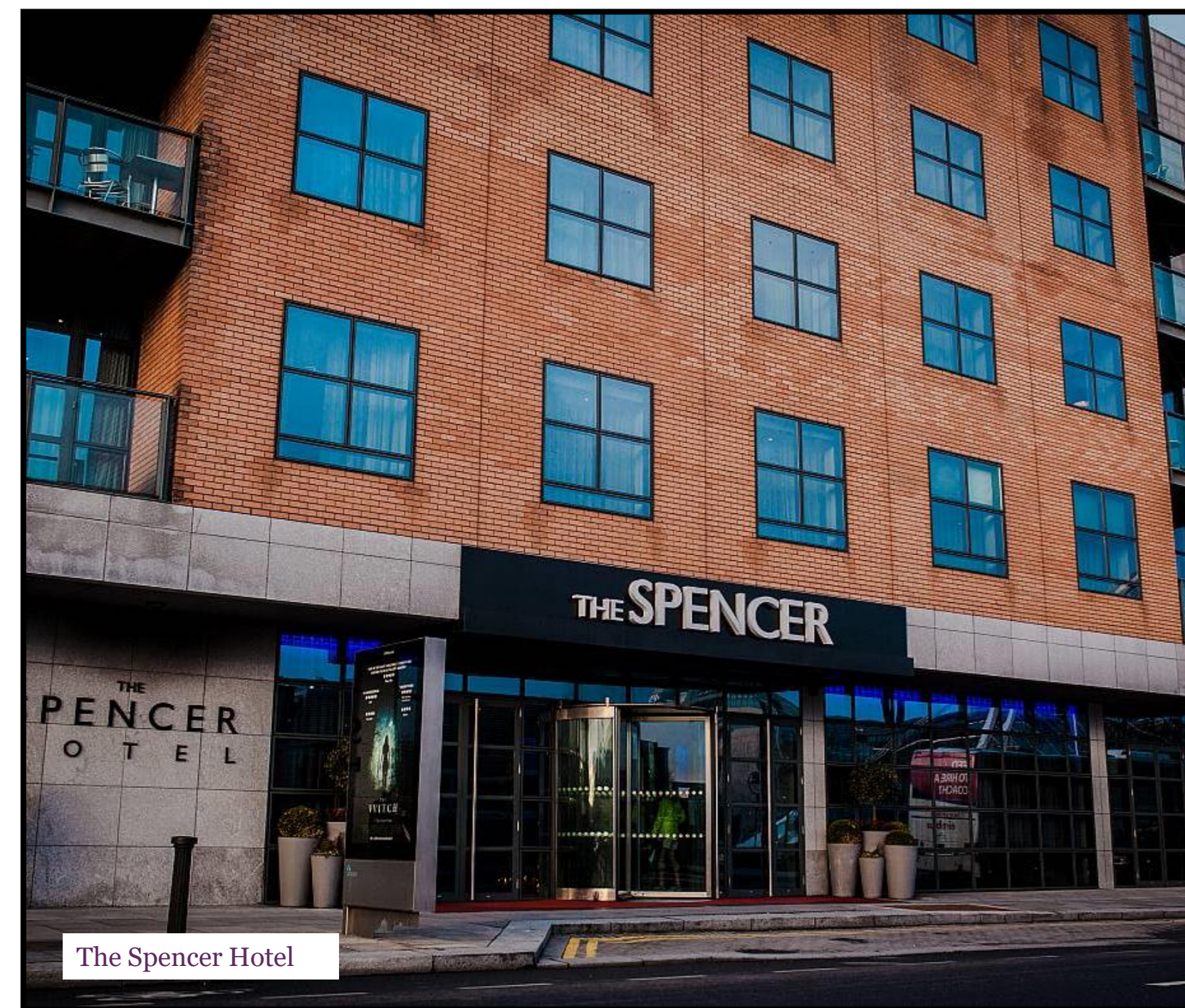
- Infant milk formula manufacturing,
- Animal health products
- Veterinary pharmaceutical

RECREATIONAL

Quinn Downes has a history of providing quality services in the design and mechanical installation for hotels and leisure facilities. We have performed work for reputable clientele including O’Callaghan Hotel Group, Double Tree Hotel, Westbury Hotel and many more. We have completed a wide range of hotel and leisure projects from overseas hotel renovations to leisure centre energy upgrades and refurbishments.



Alexander Hotel



The Spencer Hotel



The Davenport Hotel



The Capital Hotel



The Elliott Hotel, Gibraltar



Portmarnock Sports & Leisure Centre



St Stephen's Green Hotel

VOCATIONAL

Providing services in Community/ Vocational sector since 2001, the majority of our works are within listed buildings and this in itself gives rise to a multitude of issues regarding selection of suitable plant/equipment, routing of services in the buildings fabric and installation of systems. Each and every project is unique and we pride ourselves in overcoming every obstacle to deliver success in each instance.

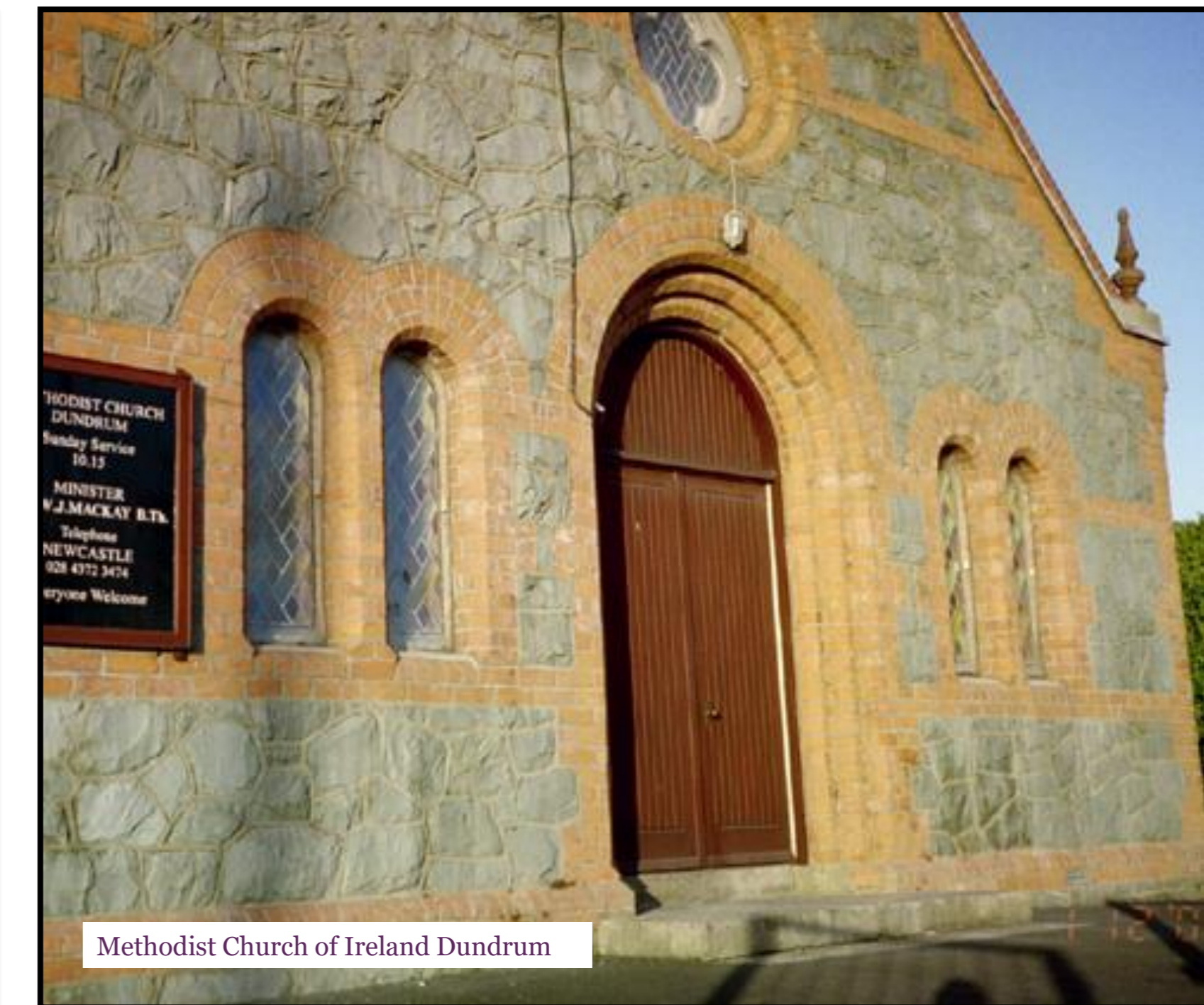




St Vincent De Paul



Order of Carmelites - Gort Muire

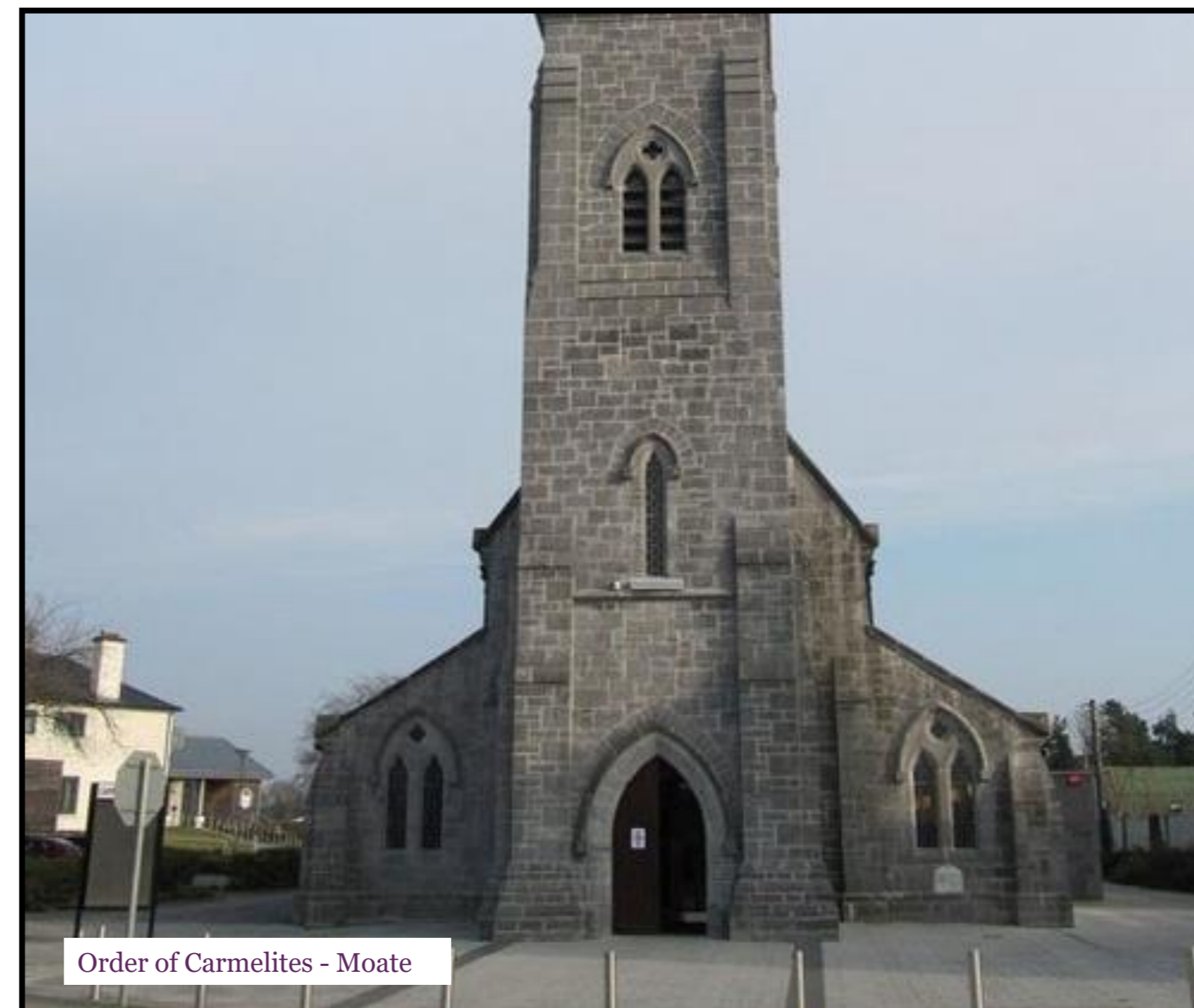


Methodist Church of Ireland Dundrum

➤ **Understanding & Planning of Mechanical Systems In Listed/Conservation Buildings**

➤ **Church Under Floor Heating Systems**

➤ **Refurbishment Of Mechanical Services**



Order of Carmelites - Moate

- **Sisters of Loreto**
- **Franciscan Order**
- **Carmelite Order**
- **Christian Brothers**
- **Vincentian Order**
- **St John Of Gods**
- **Methodist Church**
- **Church of Ireland**
- **Jesuits**
- **Dominican Order**
- **St Vincent De Paul**
- **Sisters Of Mercy**

RESIDENTIAL

QDI have completed a wide range of projects from luxury apartments to one off prestige houses. We are specialists in the design and installation of heating, plumbing, ventilation and building management systems.

Together with our Service & Maintenance Division, we are able to provide all round service from design, install, commissioning, facilities management and 24 hour, 7 days a week, 365 days a year maintenance.



Tallaght Cross West Apartments



50 Abington



Mitchell House Apartments



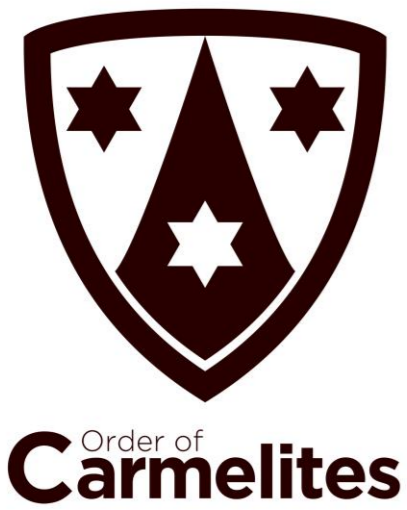
Silkmore Developments

- Mitchell House Apartments
- Abington House, Co. Dublin
- Temple Hill Apartment Complex
- Marlborough St. Apartments, Dublin
- Private House, Killiney, Co. Dublin
- 50 Abington, Co. Dublin



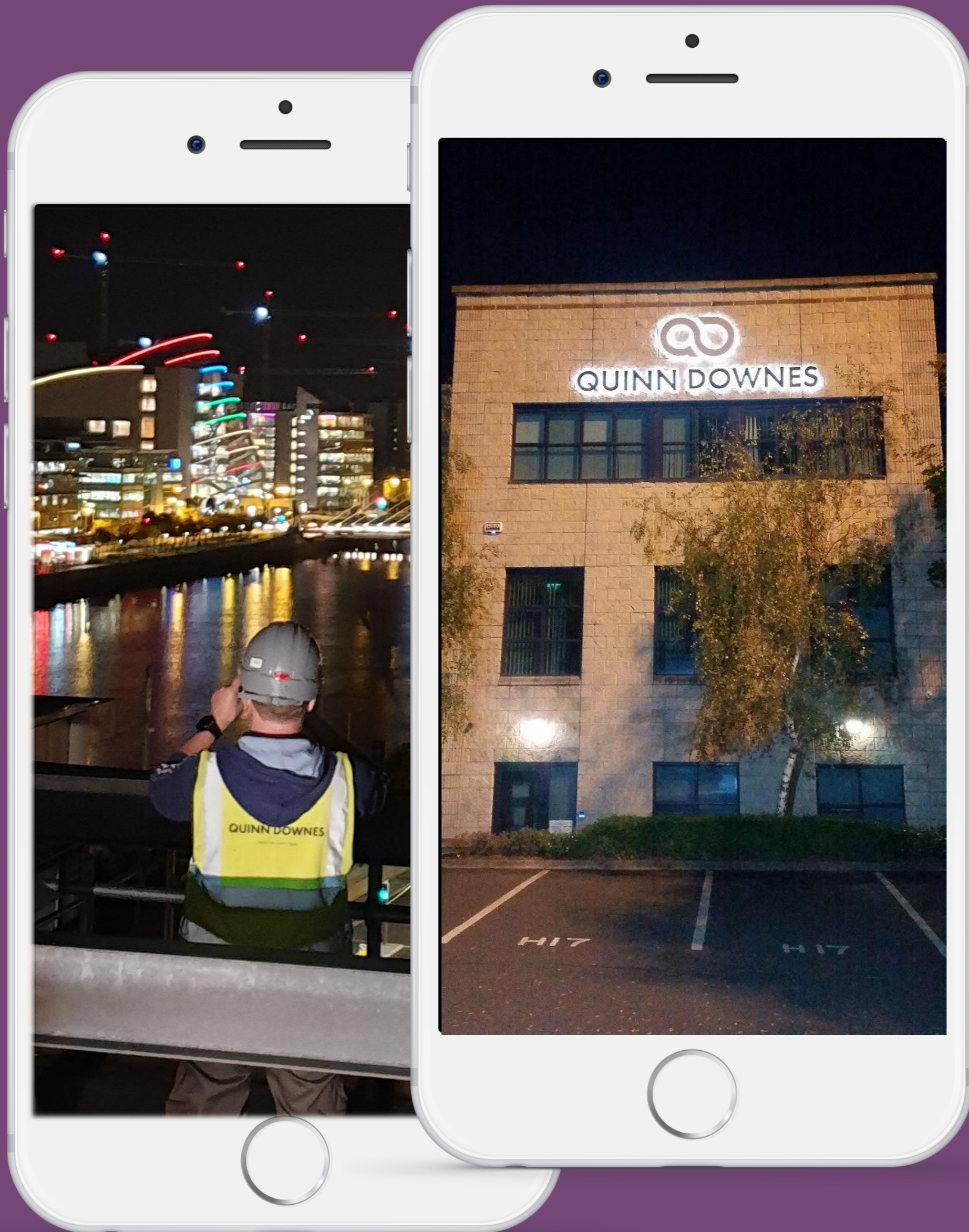
Blue Ridge Killiney

- NZEB
- Centralised Energy Centre
- District Heating
- Heat Interface Units
- Renewable Energy
- Air to Air Heat Recovery Ventilation



GALLERY





Contact Us

Unit H17
Centrepont Business Park,
Oak Rd,
Dublin 12

Phone (01) 424 3300
Emergency 0818 25 22 88

Email: info@quinndownes.com

Web: www.quinndownes.com



<https://ie.linkedin.com/company/quinn-downes>



Company Profile



TABLE OF CONTENTS

- About QDSM
- Our Growth
- Our Services
- 1st Class Customer Service
- Company Structure
- Our Service Desk
- 24 Hour Emergency Call Out
- Planned Preventative Maintenance
- Small Projects
- Surveys
- Some of our Clients
- Gallery
- Contact Us

About QDSM

QDSM is one of the leading Irish owned companies specializing in the provision of complete Hard Services Maintenance & Facility Supports. It operates under the Quinn Downes Group which was established in 1999. QDSM was incorporated as there was a demand in the market for a class-leading service company that could deliver all Hard Engineering Services under the one umbrella.



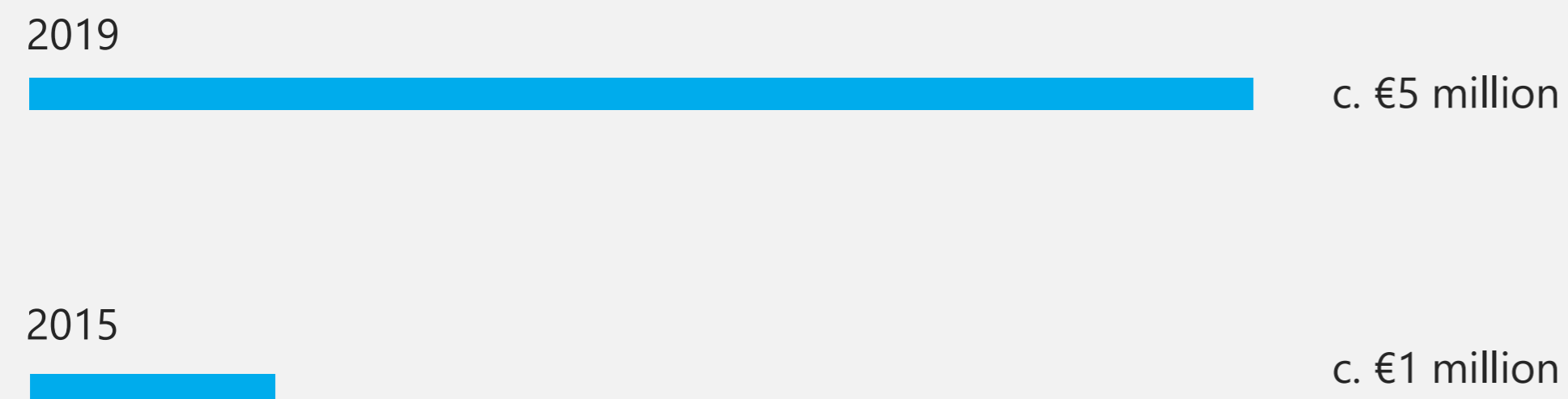
Our Growth

QDSM have over 40 staff which includes Project Manager, Key Account Managers, field service engineers comprising of HVAC Engineers, RGII Certified Engineers, Electrical Engineers, Junior Engineers from 1st to 4th year and our office support team. Our continual education and upskilling of all our employees ensure that we are able to meet and exceed our customers' expectations and also meet industry standards and best practices.

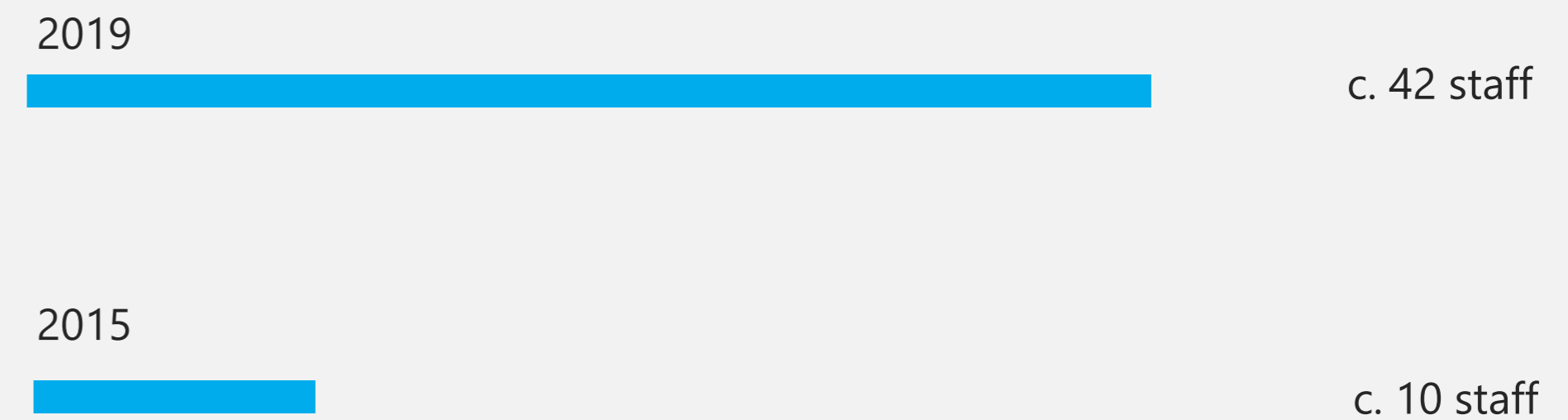


Quinn Downes Service & Maintenance 2015 - 2019

Annual Turnover



Employees



Our Services

Building Hard Services

- HVAC
- BMS Controls
- Electrical Maintenance (Emergency Lighting, Fire & Intruder Alarms)
- Medical and process gases
- Automatic Doors & Entrances

Sectors

- Healthcare
- Education
- Retail
- Recreation
- Corporate
- Pharmaceutical
- Public Sector
- Vocational
- Data Centres

Frameworks

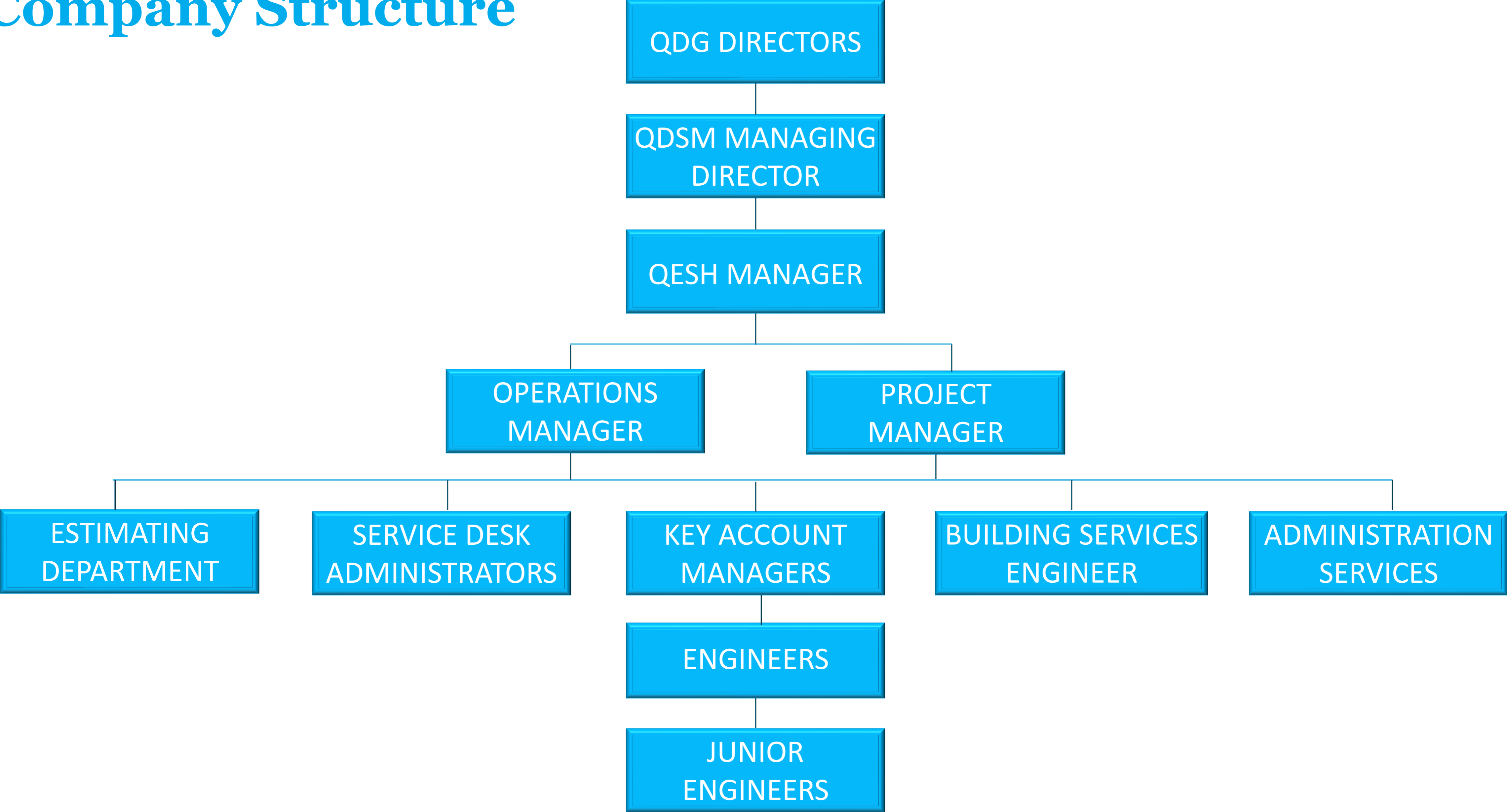
- OPW Nationwide
- HSE Nationwide
- Beaumont Hospital, Dublin - 24 Hour Emergency call, Maintenance & Small Works
- Our Lady Of Lourdes Hospital, Drogheda - 24 Hour Emergency Call, Maintenance & Small Works
- UCD – Maintenance and small works
- Trinity College Dublin, – Maintenance & Small Works

1st Class Customer Service

- **Intelligent Software:** Using intelligent field management software, we create and schedule both planned and reactive jobs directly to our field engineers' devices allowing us to generate instant reports.
- **Portal:** Our customers can access our portal which is a gateway to view all relevant jobs and documents relating to them.
- **24/7/365 Service desk:** This gives all our customers reassurance and confidence that their facility is in safe hands.
(01 424 2424/0818 252288).
- **Emergency, around the clock support:** We provide emergency support to our clients such as Beaumont Hospital Dublin & Our Lady of Lourdes Hospital Drogheda and have done for more than 10 years now (Quinn Downes Group).
- **Continual education and upskilling:** We strive to ensure our employees are regularly upskilled to meet and exceed our customers' expectations and also meet industry standards and best practices.



Company Structure



Our Service Desk

Our unrivalled experience and level of service in multi disciplines enables us to service and maintain our clients' buildings 365 days a year. This service is supported by our 24/7/365 Service desk (01 424 2424 / 0818 252 288). This gives all our customers reassurance and confidence that their facility is in safe hands. They know that no matter the issue or urgency it will be resolved as quickly as possible.




24 HOUR EMERGENCY CALL OUT

Summary of Service:

Our service desk operates 24/7/365 days per year nationwide and is supported by an on-call manager and our dedicated on-call service engineers. Between them they deal with all out-of-hours emergency calls in a fast and efficient manner. In cases where escalation is required to deal with a major out-of-hours emergency repair, the duty line manager will ensure that they take control of the situation and manage it until all is made safe and repairs are complete.

Tel: 01 42 42 424 / 0818 25 22 88

data centres





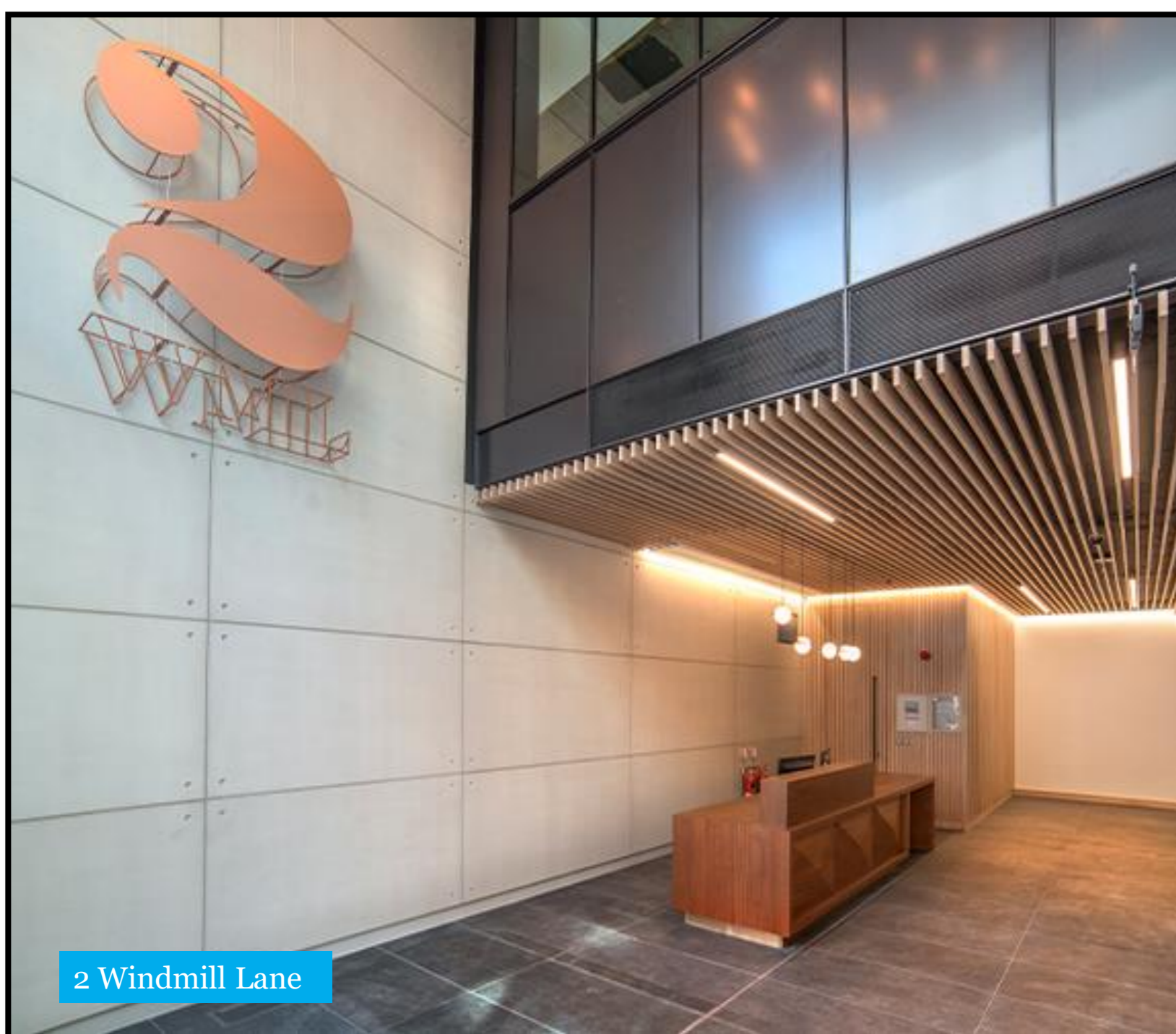
Our Lady of Lourdes, Drogheda



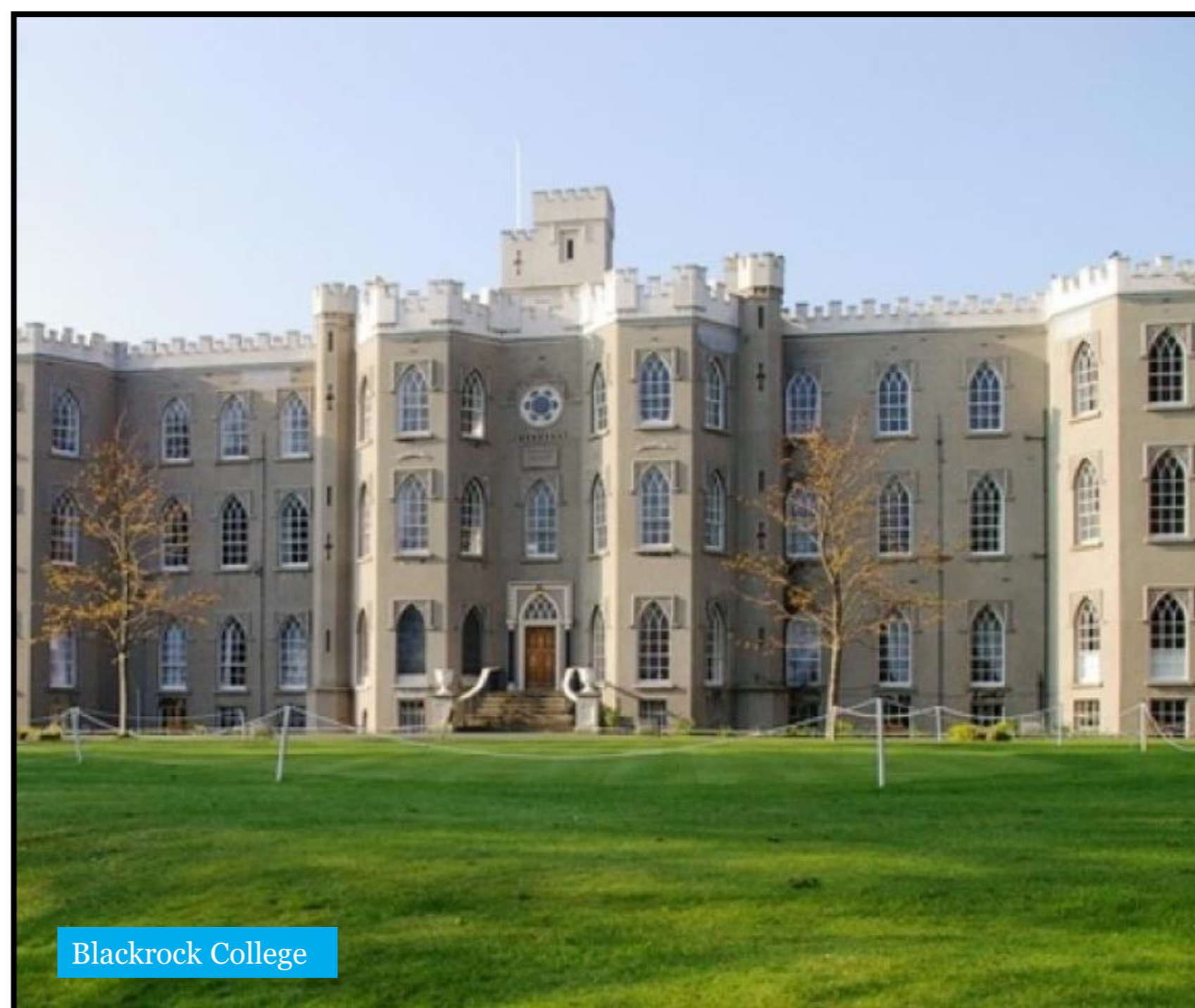
Holiday Inn



Mylan Ireland



2 Windmill Lane



Blackrock College



Bank of Ireland

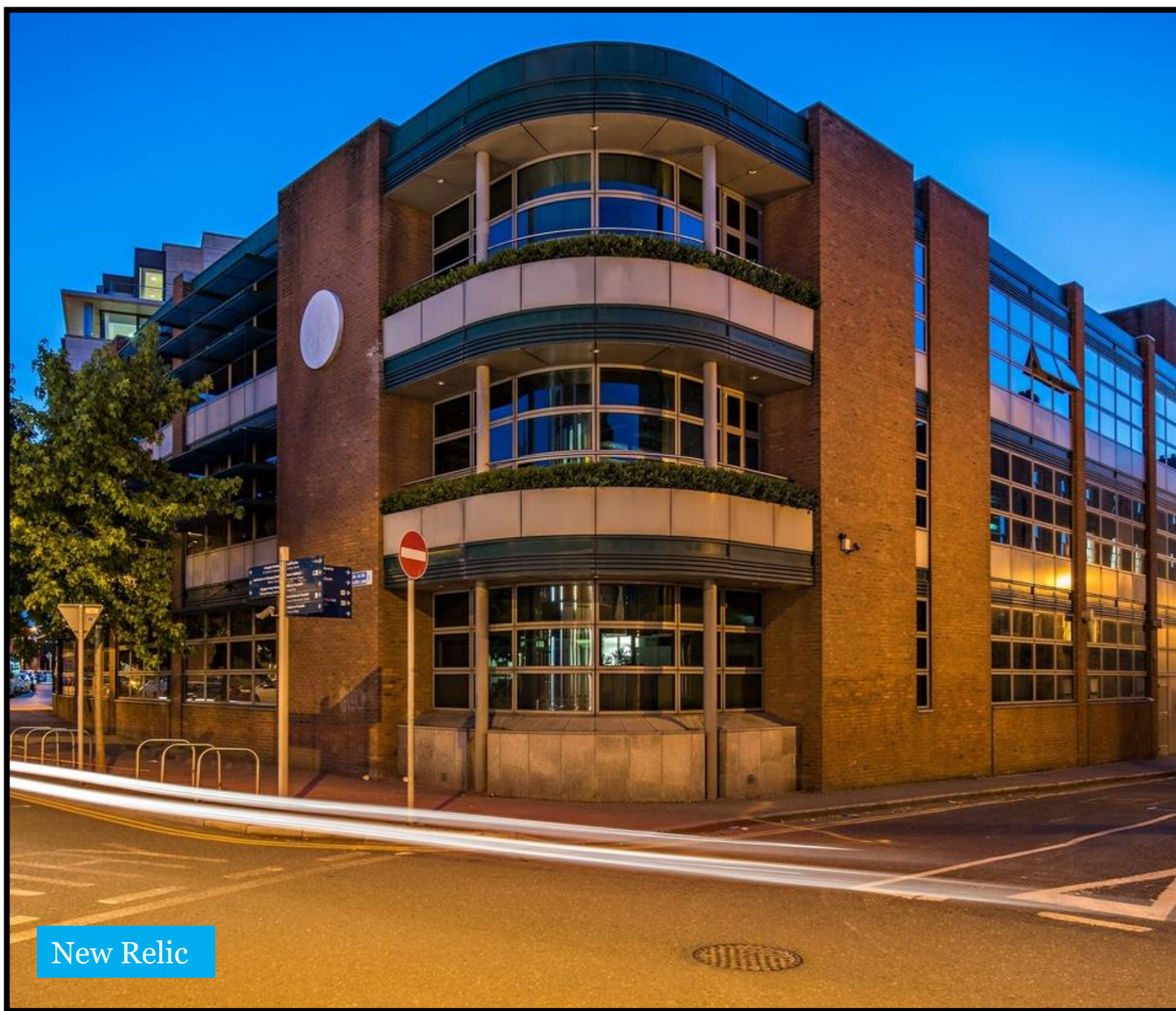
PLANNED PREVENTATIVE MAINTENANCE

Summary of Service:

QDSM service the complete building hard services. We liaise closely with the Building Manager and meticulously plan all service visits. We also cater for all emergency and reactive calls. Comprehensive Executive Reports are compiled and issued after each visit as well as holding monthly meetings to go through each report and discuss our KPIs.



Zoetis



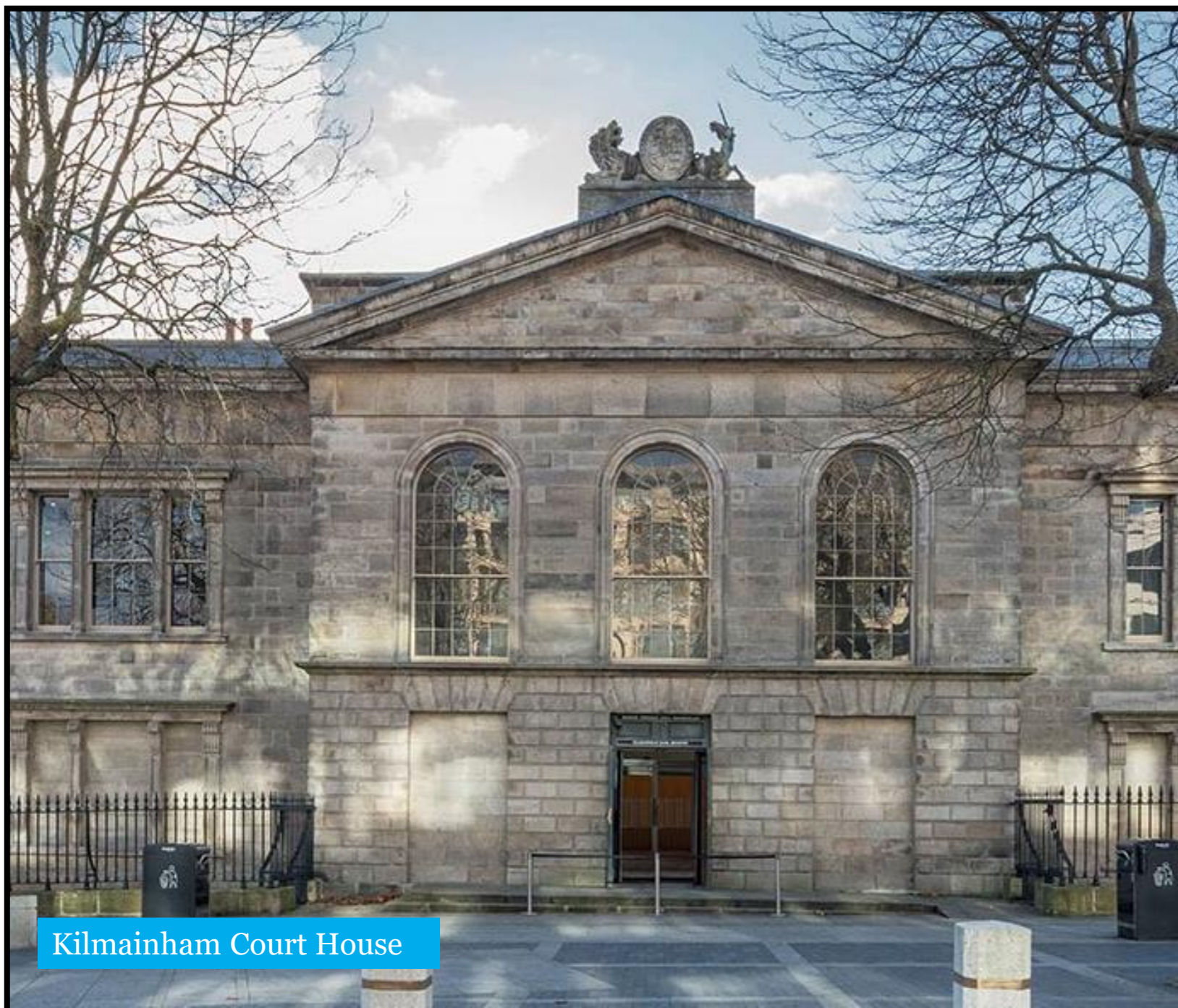
New Relic



The K Club



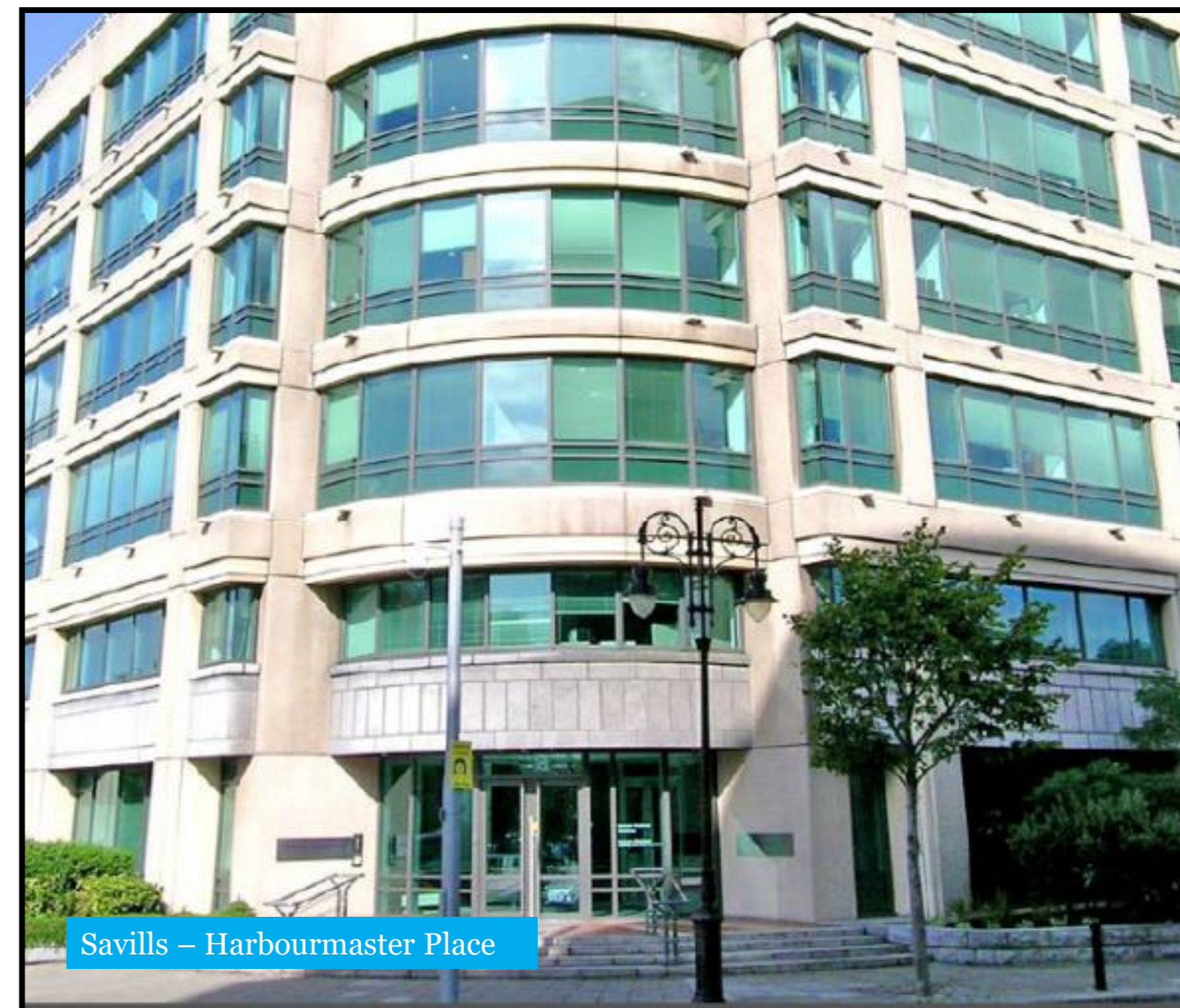
Trinity College Dublin



Kilmainham Court House



Lucan Shopping Centre



Savills - Harbourmaster Place

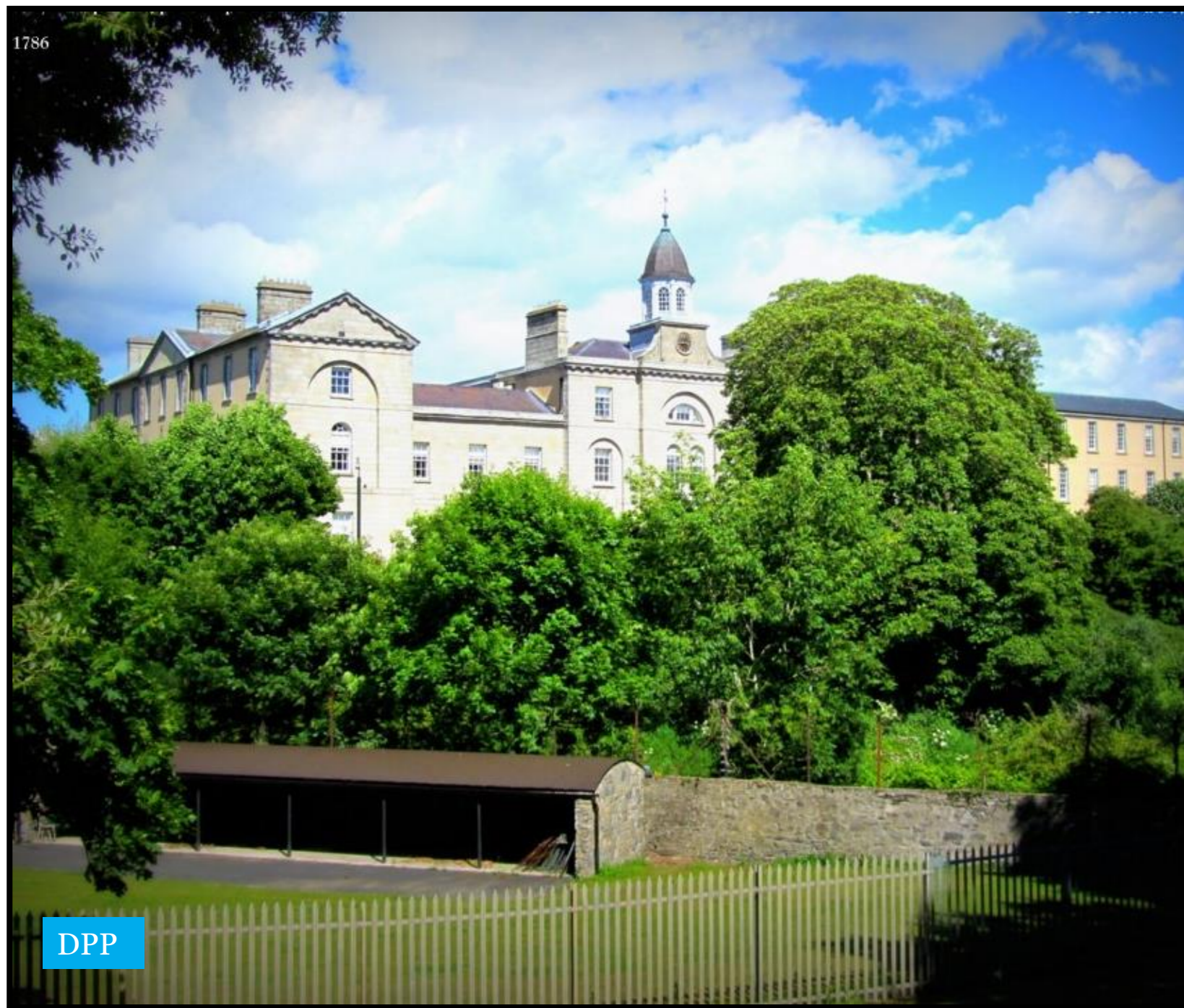
SMALL PROJECTS

Summary of Service:

We are very experienced in carrying out improvement and small project works in existing live buildings. We pride ourselves in providing a professional, cost efficient service while ensuring that the needs of the end user are always our top priority. We have all of the resources, expertise and experience required to replace major items of plant whilst ensuring a smooth changeover without any disruption to the normal operation of the building.

Aramark - Eirgrid





DPP



Naas General Hospital



2 Grand Canal Dock



Garda Headquarters



Gort Muire Carmelite Centre



Dun Laoghaire Shopping Centre

SURVEYS

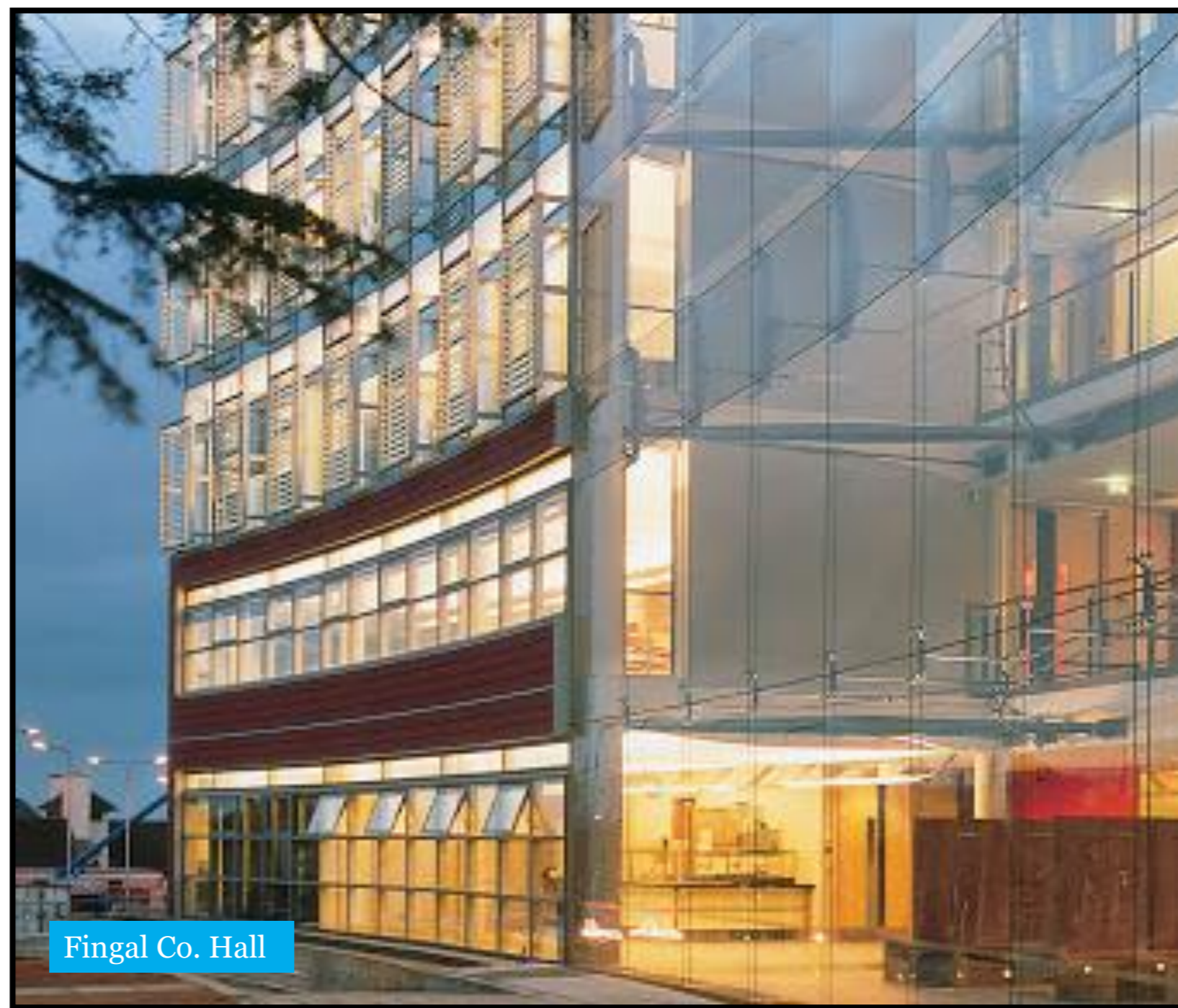
Summary of Service:

As with all our customers, we perform surveys on their behalf on building's that they currently own/manage or potentially may manage. Our survey and follow up reporting allows them to make informed decisions with the backup documentation to support them. During these surveys, we generate Asset Registers, Condition Reports, Recommendations with Costings and most importantly Life Cycle Analysis reports for all of the services in the building.





Lucan Educate Together N.S.



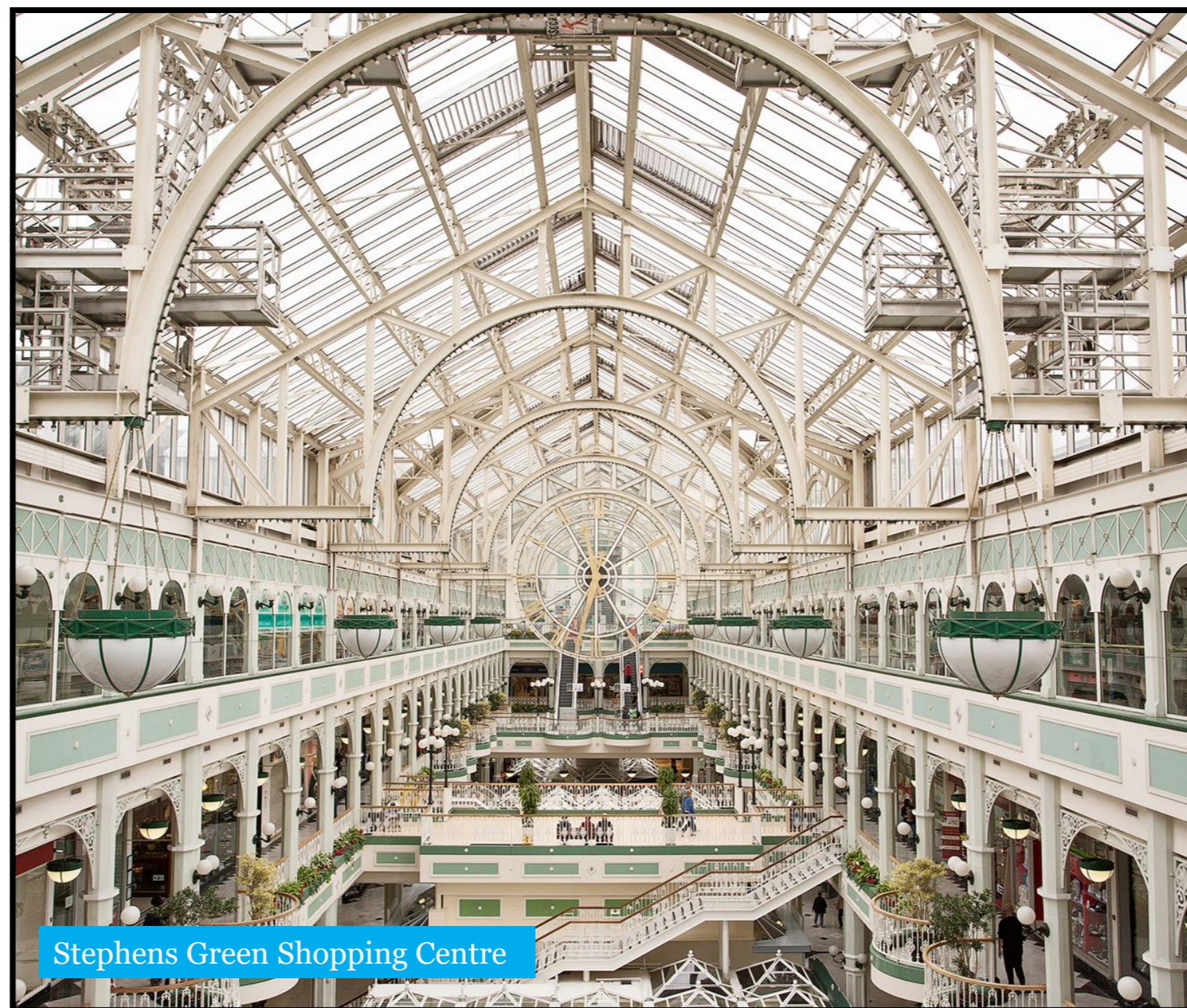
Fingal Co. Hall



Terenure College



Ebay



Stephens Green Shopping Centre



Portmarnock Sports & Leisure Centre

Some of our clients



GALLERY





Contact Us

Unit H17
Centrepont Business Park,
Oak Rd,
Dublin 12

Phone: (01) 424 2424
Emergency 0818 25 22 88

Email: service@quinndownes.com

Web: www.quinndownes.com



<https://ie.linkedin.com/company/quinn-downes>