



Company Profile

 NSAI	 HEALTH & SAFETY ISO 45001:2018 NSAI Certified	 QUALITY ISO 9001:2015 NSAI Certified	 ENVIRONMENT ISO 14001:2015 NSAI Certified
---	---	---	--

TABLE OF CONTENTS

- Our Capabilities
- Our Services
- Sectors
- Company Structure
- Our Commitment to our Clients
- Healthcare
- Education
- Corporate
- Public
- Retail
- Food & Pharma
- Recreational
- Vocational
- Residential
- Gallery
- Contact Us

Our Capabilities

- Project Management
- Design and Build
- Budget Estimates
- Engineering
- Co-ordination
- Procurement
- Value Engineering
- Commissioning
- Operation & Maintenance
- Inspections & Snagging
- Rapid Build
- Term Service Contracts
- Turnkey Projects
- LEED & BREEAM Standards





Our Services

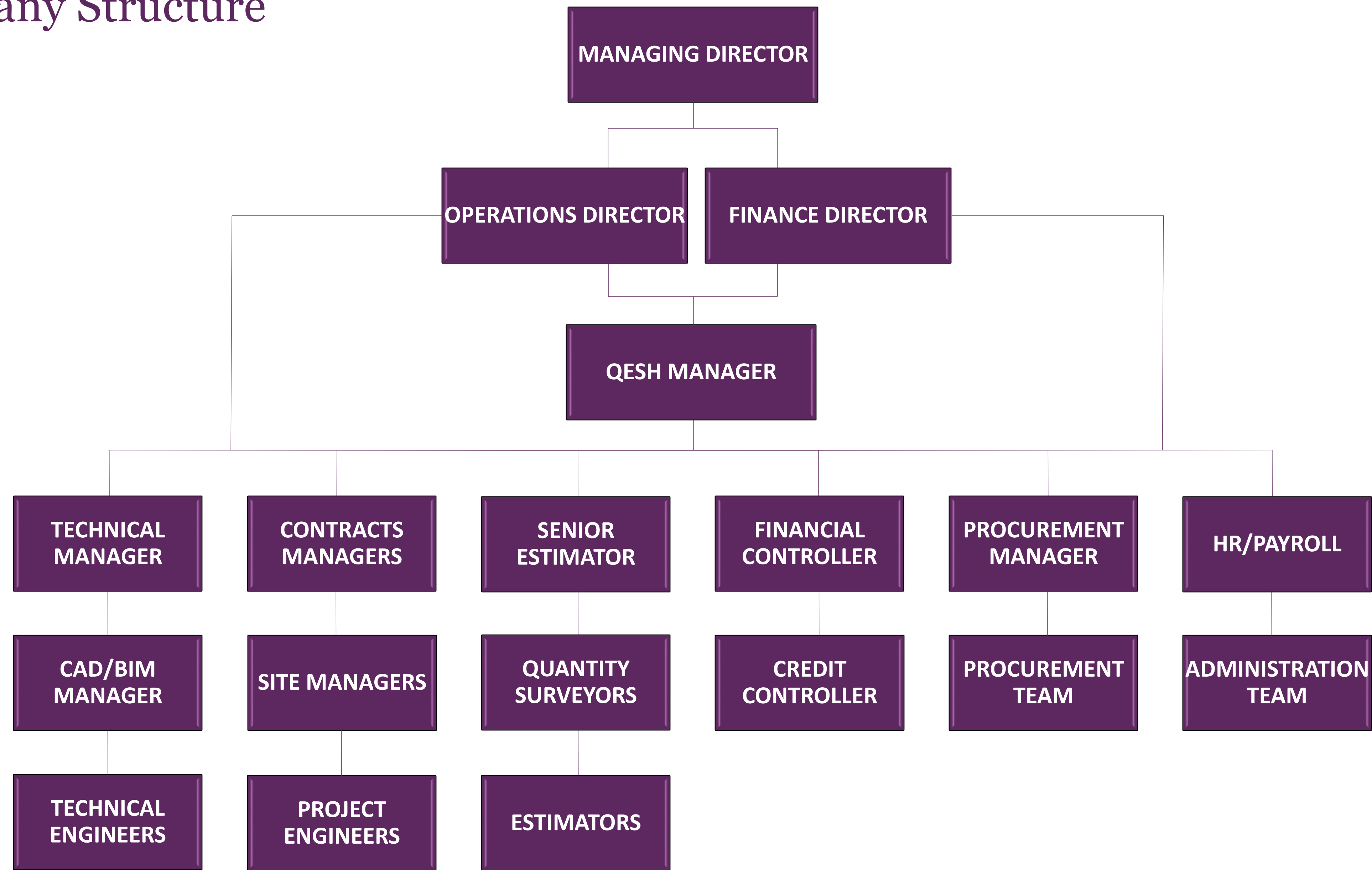
- Heating Systems
- Ventilation & Air Conditioning Systems
- Kitchen Ventilation Systems
- Chilled Water Systems & Chiller Replacements
- Fan Coil Unit & Chilled Beam Installations
- Specialist Data Centre Air Conditioning Systems
- Building Energy Management Systems & Automated Controls
- Water Services including Rainwater Harvesting & Solar Hot Water
- Natural Gas Services Installation including gas detection systems
- Soils & Waste Installations including H.D.P.E. Systems
- Fire Protections Services including Specialist ICT Suppression Systems
- Complete Design, Build & Commissioning Service



Sectors

- Healthcare
- Education
- Corporate
- Public Sector
- Retail
- Food & Pharma
- Recreational
- Vocational
- Residential

Company Structure





Our Commitment to our Clients

- Provide a professional service.
- Promote a safe working environment.
- Carry out projects using the most up to date methodology & industry-based knowledge.
- Continually improve the quality of the products & services we provide.
- Ensure all staff are trained and fully compliant with H&S regulations.
- Actively encourage all staff to progress with their training and education.

HEALTHCARE

Design Input

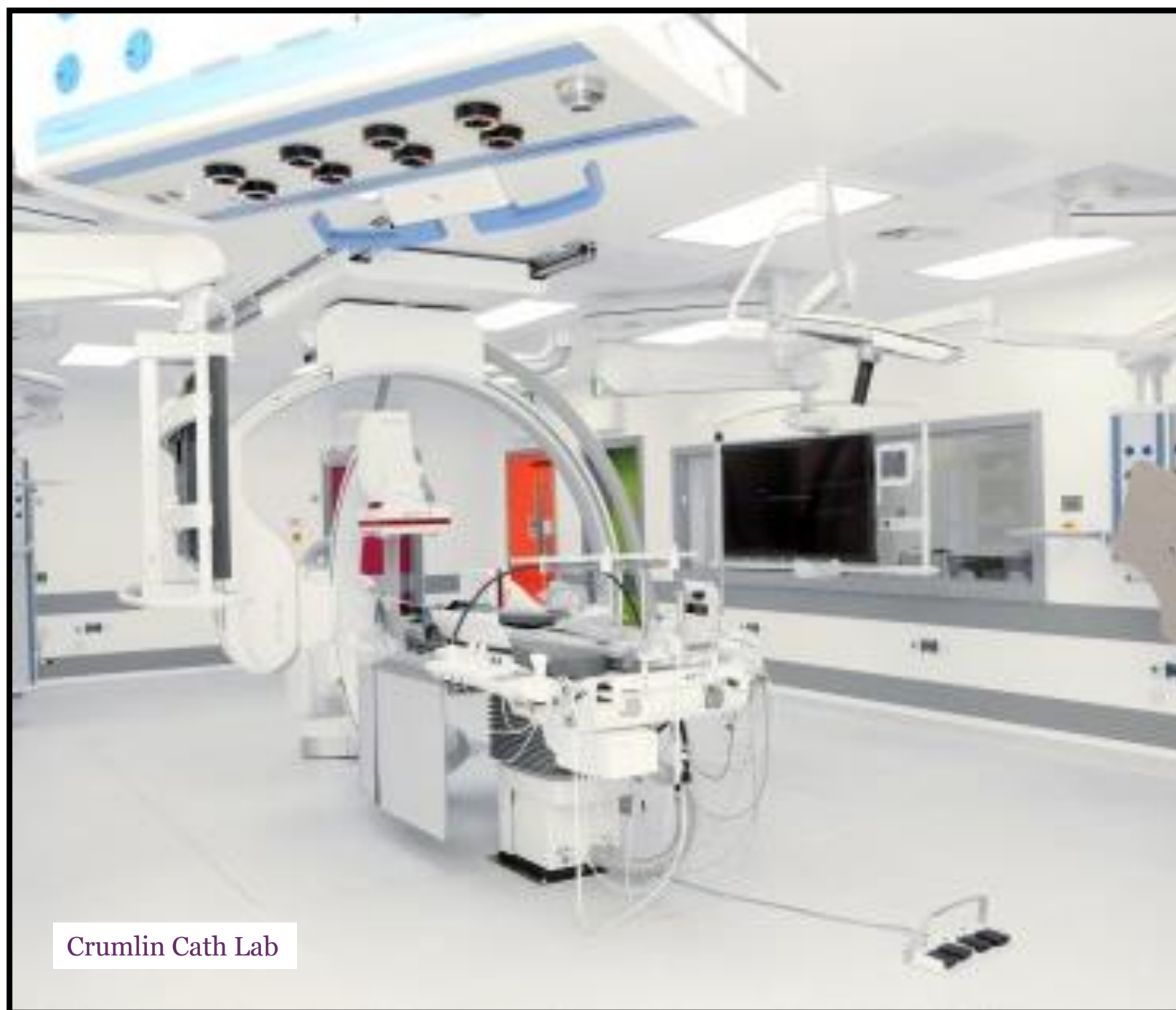
- Acute Psychiatric Facilities - Beaumont Hospital
- Acute Psychiatric Facilities - Our Lady of Lourdes Hospital
- M.R.I. Facility Beaumont Hospital
- Orthopaedic Theatre & Cath Lab – CHI, Crumlin
- 60 Bed Acute Unit – University Hospital Limerick

Hospital Departments

- Cath Labs
- Orthopaedic Theatres
- MRI Rooms
- HDUs
- Medical Isolation Rooms
- Endoscopy
- Radiology
- A&E
- Blood Labs
- Mortuaries



Sports Surgery Clinic, Santry



- Beaumont Hospital
- Royal College of Surgeons
- Mater Misericordiae Hospital
- St James Hospital
- St Vincent's
- Connolly Hospital
- Our Lady's Children's Hospital Crumlin
- Tallaght University Hospital
- University Hospital Limerick
- Our Lady of Lourdes, Drogheda
- National Maternity Hospital
- Bon Secours
- University Hospital Galway
- Sports Surgery Clinic
- Midland Regional Hospital





OLOL Hospital Drogheda, APU



Royal College of Surgeons



University Hospital Limerick, 60 Bed Acute Unit



APU, Beaumont Hospital



Tallaght Hospital A&E Dept



National Maternity Hospital

EDUCATION

Dept of Education Summer Works & Rapid Build Programme

- St Brigid's N.S. Stillorgan
- Kildress N.S. Rathgar
- Sacred Heart N.S. Clondalkin
- Flemington N.S. Balbriggan
- Marino College

Preferred Contractor

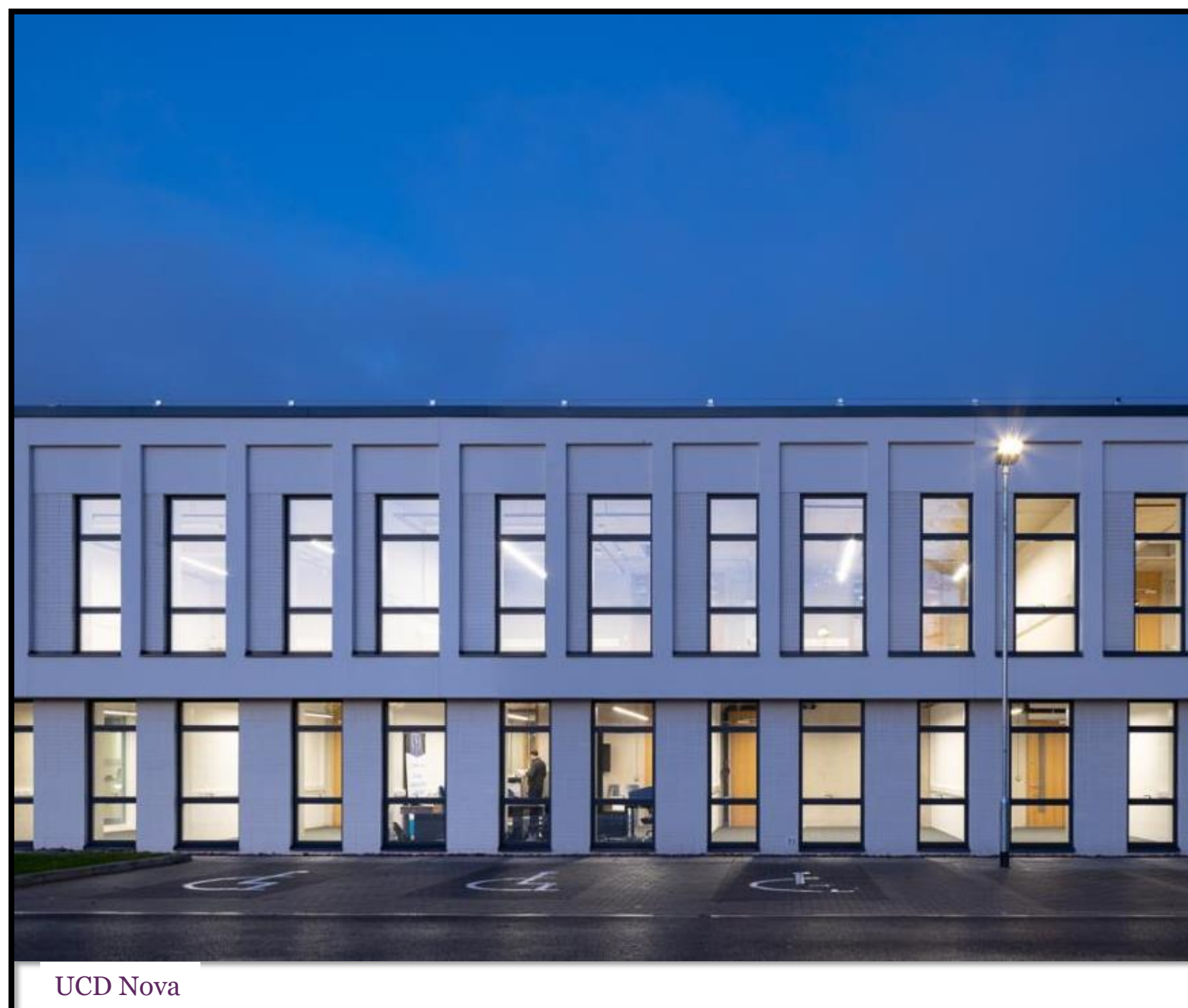
- Radiator & Radiant Panel Heating Systems
- Waste & Rain Water Harvesting Systems
- Complete Water Services
- Natural Gas Systems
- Ventilation Systems
- Wind Catcher Systems



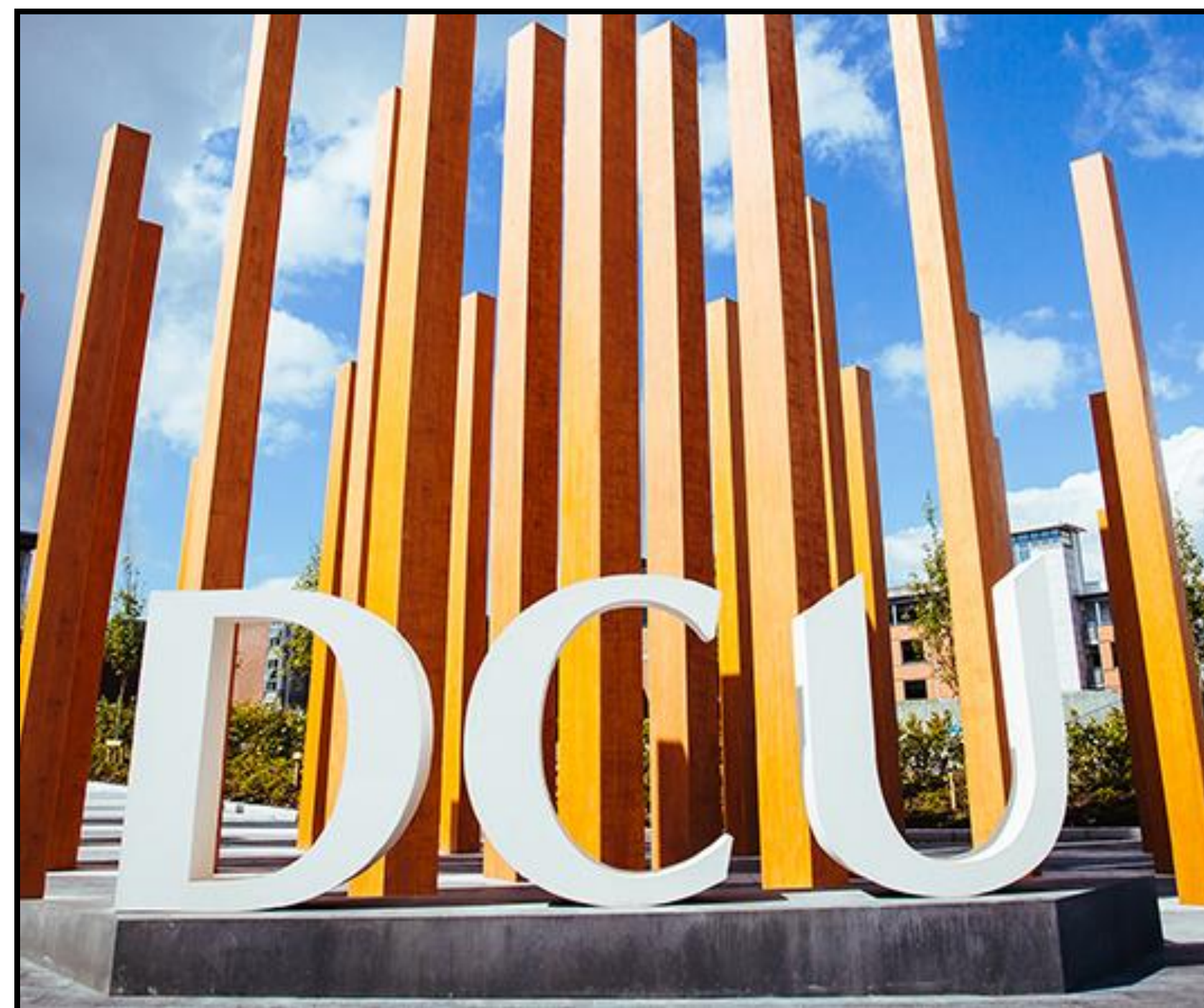
DCU Stokes Building



Trinity College was our first client in this sector, and we have continued to work successfully in the college since 1999. We also have worked extensively in the primary and secondary school sector as the Main Contractor on refurbishment works or in partnership with construction companies on new builds.



UCD Nova



Marino College



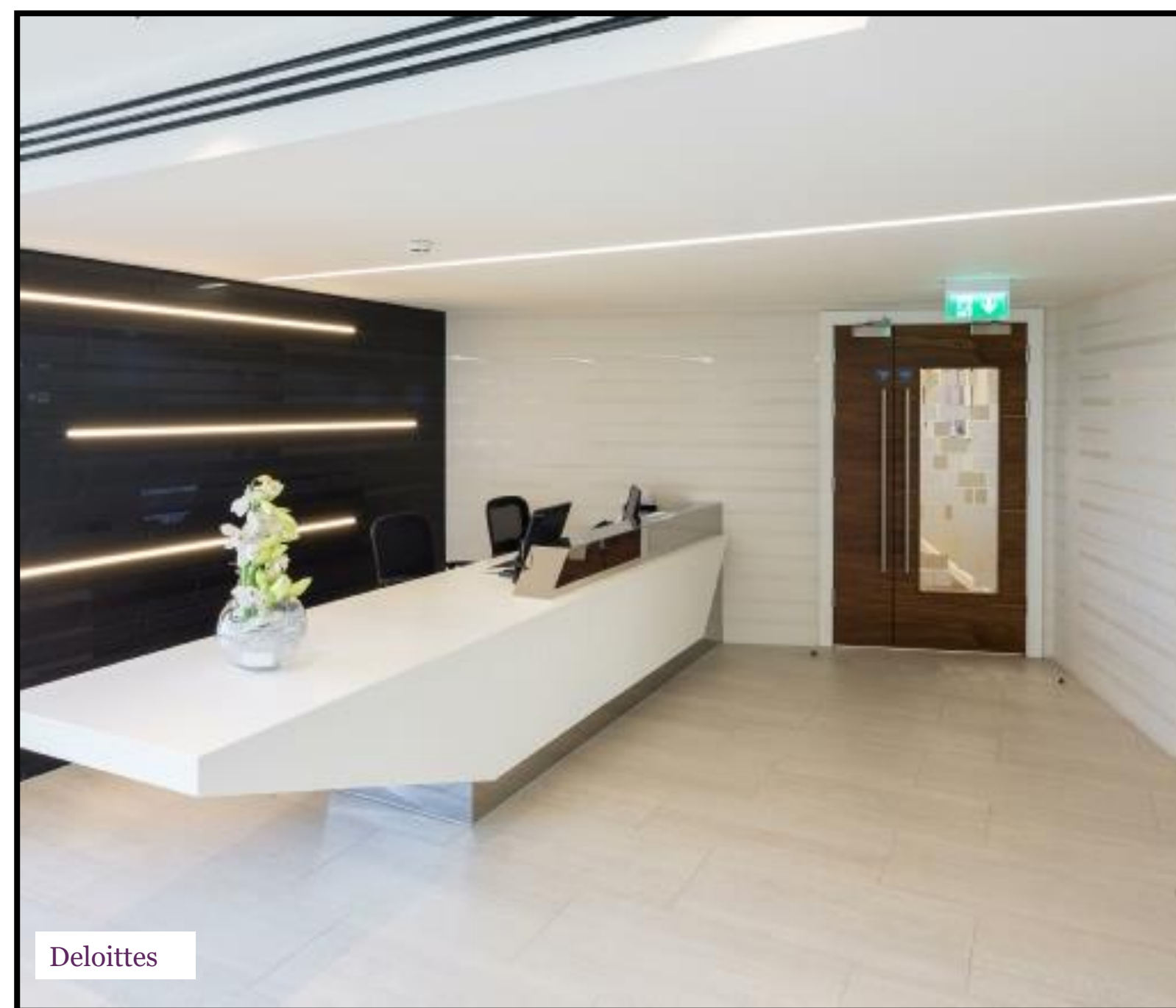
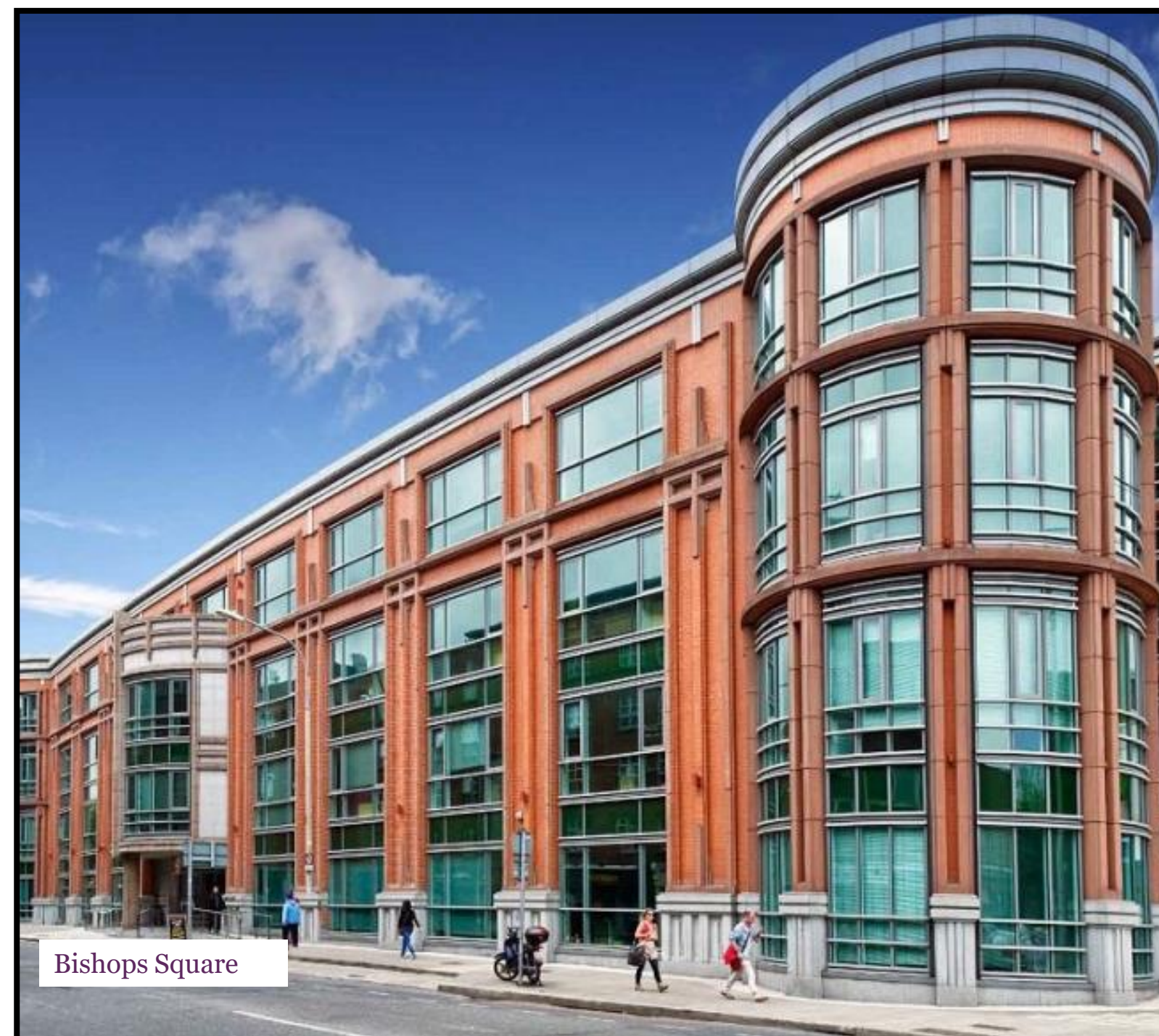
CORPORATE

Quinn Downes have vast experience in providing Mechanical Services Installations for fast track fit-out solutions, shell & core, office fit-outs and design & build solutions nationwide.

Our Service & Maintenance Team offers a complete follow up aftercare solution with 24 hour, 7 days a week, 365 days a year call out service.



The Hive, Sandyford



PUBLIC

Our staff have been Garda Vetted to work in a wide range of locations that are highly sensitive from a security and information viewpoint and are trained to carry out their duties in the Live environment in a manner that causes the least disruption to our clients.

Our Service & Maintenance Team offers a complete follow up aftercare solution with 24 hour, 7 days a week, 365 days a year call out service.



UCD Newman House (MoLI)



Dublin City Council



Dept of Enterprise



ESB



Dept of Defence, The Curragh



Chester Beatty Library



Garda Boat Club

RETAIL

Quinn Downes work directly with clients to design systems which meet the individual requirement of each project. We have also carried out projects while the business continued to trade successfully, thus minimising the amount of downtime for our clients.



St Stephen's Green Shopping Centre



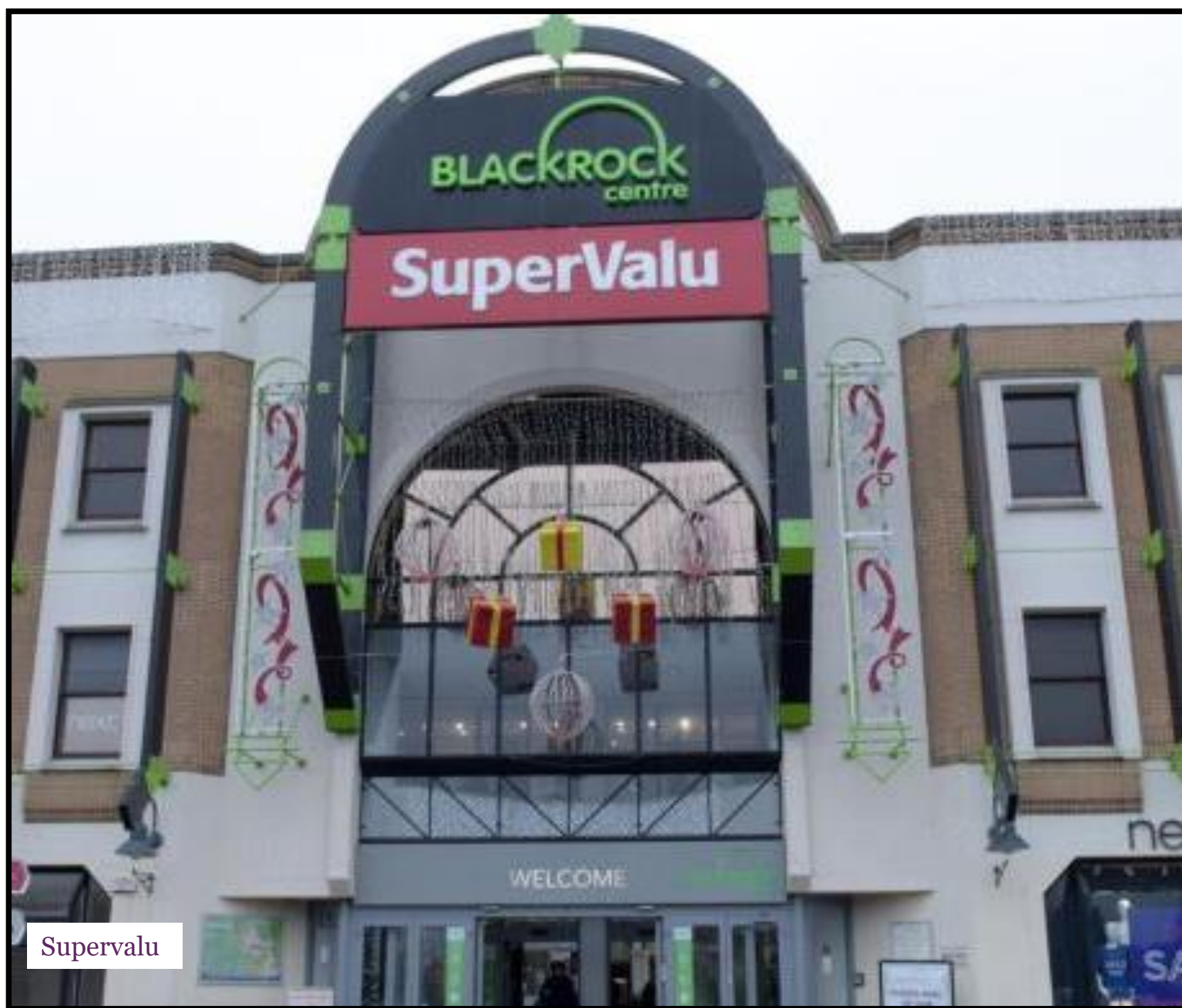
Kildare Village Shopping Outlets



Maxol Ballycoolin



Meadows & Byrne



Supervalu



Homebase



Café Mao, Dundrum Town Centre

FOOD & PHARMA

Quinn Downes have completed a number of high level pharmaceutical projects over the last number of years. We understand the protocols, procedures and expectations required to deliver first class services in this demanding, heavily regulated environment.

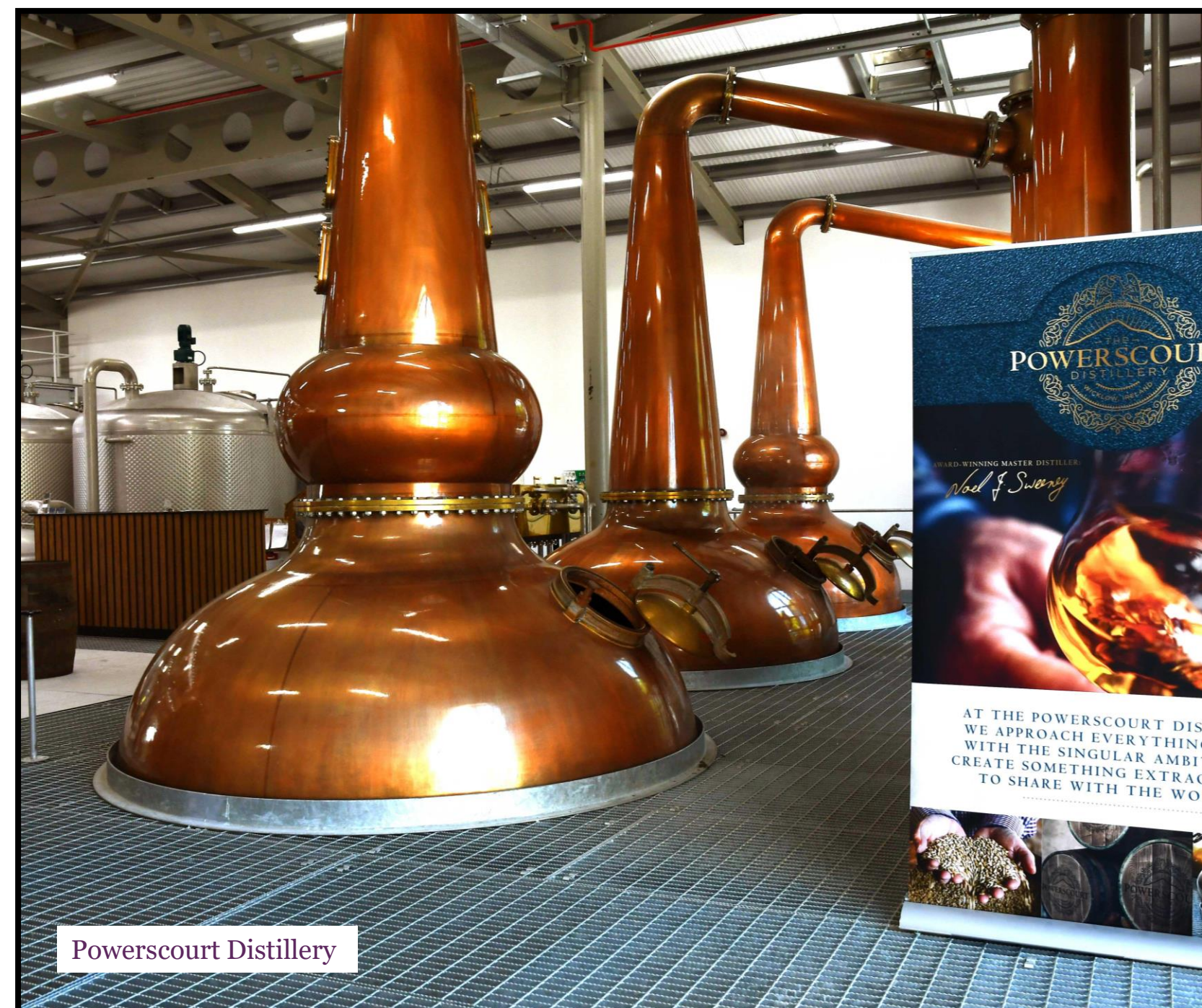




Food & Pharma



- HVAC
- Medical Gases
- QBMS & Automatic Controls
- Process Pipework & Compressed Air Services
- Specialist Water Treatment & Waste Systems
- ATEX Dust & Vapour Extract Systems
- Specialist Fire Protection Services



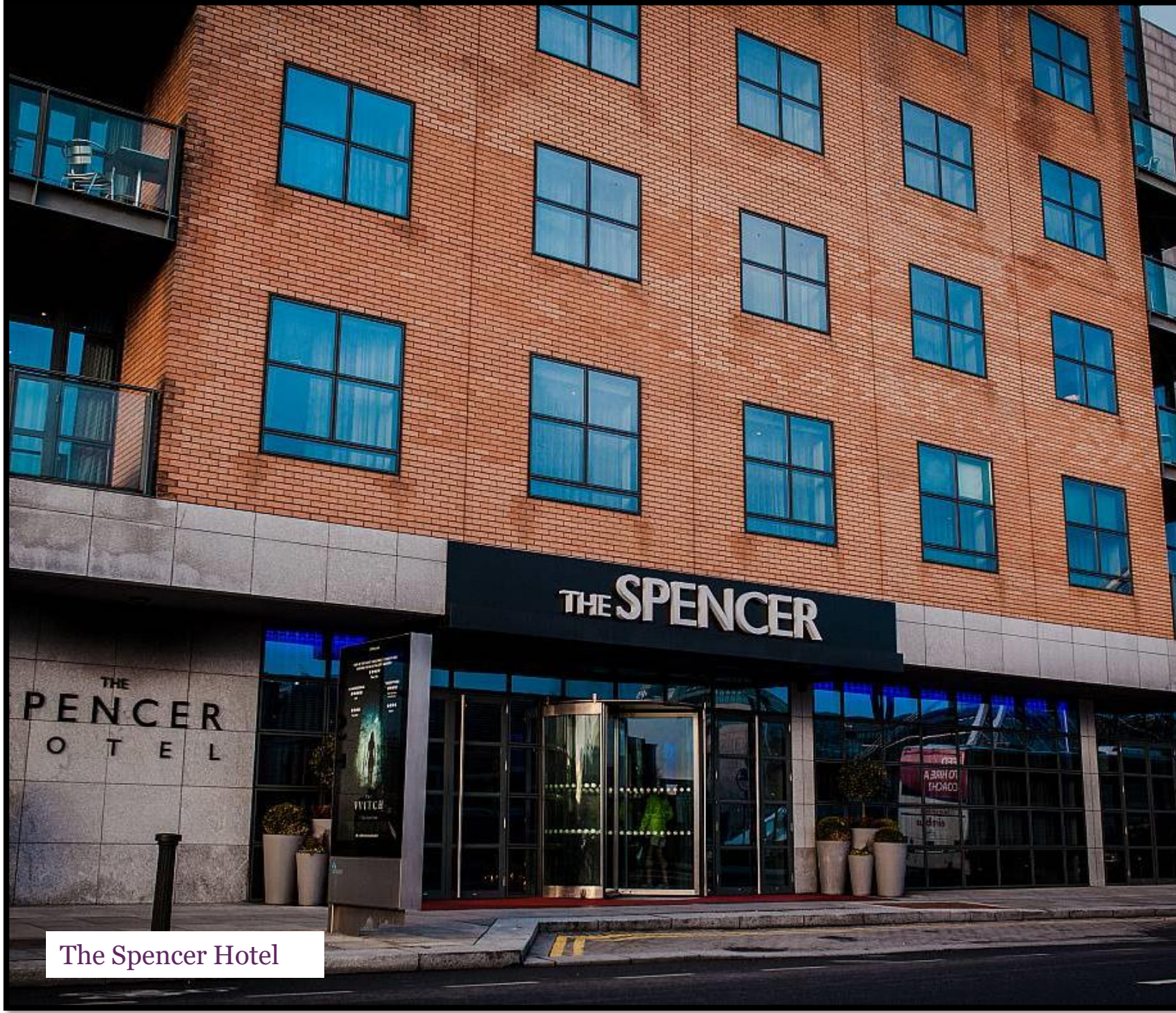
- Infant milk formula manufacturing,
- Animal health products
- Veterinary pharmaceutical

RECREATIONAL

Quinn Downes has a history of providing quality services in the design and mechanical installation for hotels and leisure facilities. We have performed work for reputable clientele including O’Callaghan Hotel Group, Double Tree Hotel, Westbury Hotel and many more. We have completed a wide range of hotel and leisure projects from overseas hotel renovations to leisure centre energy upgrades and refurbishments.



Alexander Hotel



The Spencer Hotel



The Davenport Hotel



The Capital Hotel



The Elliott Hotel, Gibraltar



Portmarnock Sports & Leisure Centre



St Stephen's Green Hotel

VOCATIONAL

Providing services in Community/ Vocational sector since 2001, the majority of our works are within listed buildings and this in itself gives rise to a multitude of issues regarding selection of suitable plant/equipment, routing of services in the buildings fabric and installation of systems. Each and every project is unique and we pride ourselves in overcoming every obstacle to deliver success in each instance.

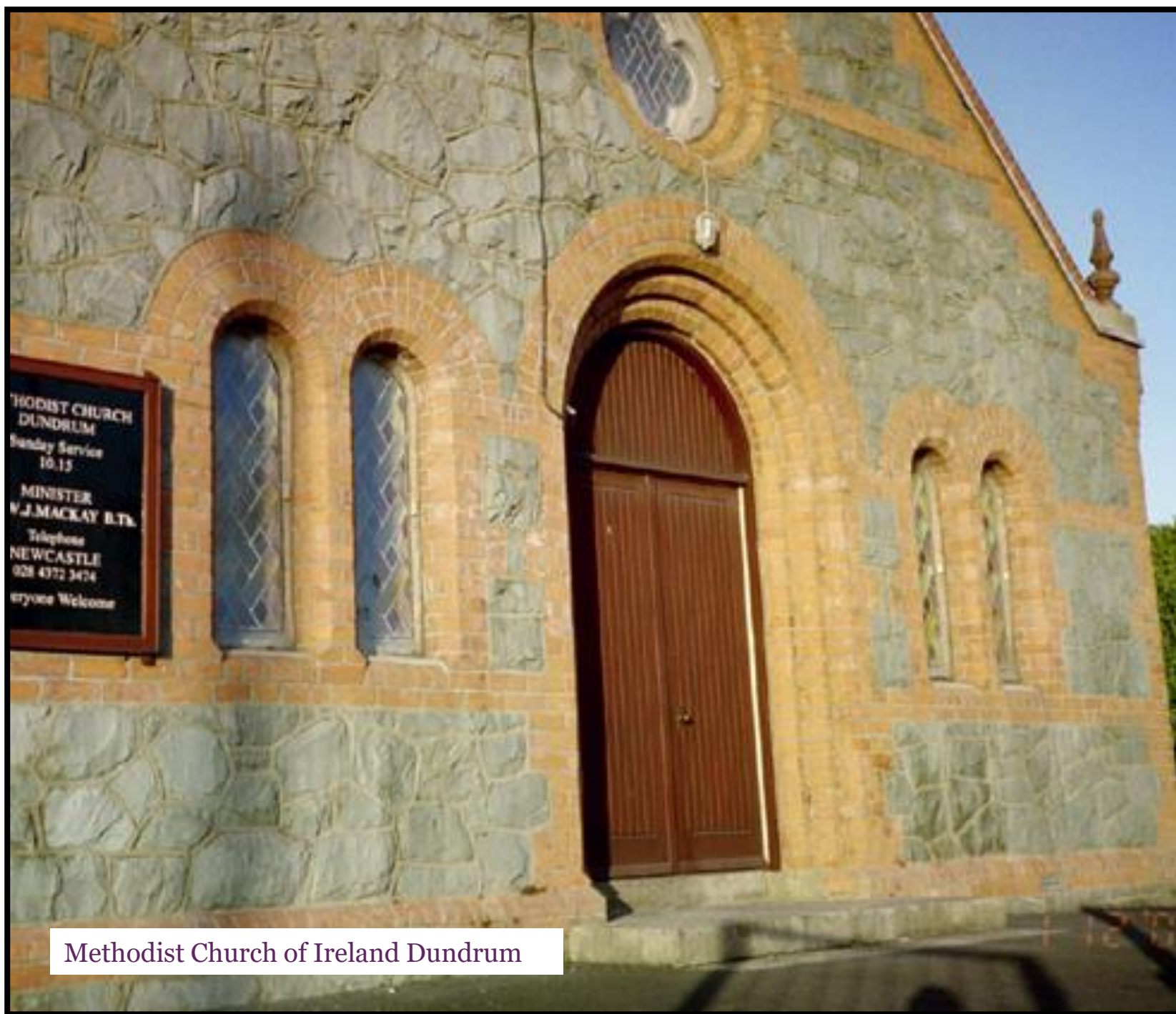




St Vincent De Paul



Order of Carmelites - Gort Muire



Methodist Church of Ireland Dundrum

- **Understanding & Planning of Mechanical Systems In Listed/Conservation Buildings**
- **Church Under Floor Heating Systems**
- **Refurbishment Of Mechanical Services**



Order of Carmelites - Moate

- | | |
|-----------------------------|-----------------------------|
| ➤ Sisters of Loreto | ➤ Methodist Church |
| ➤ Franciscan Order | ➤ Church of Ireland |
| ➤ Carmelite Order | ➤ Jesuits |
| ➤ Christian Brothers | ➤ Dominican Order |
| ➤ Vincentian Order | ➤ St Vincent De Paul |
| ➤ St John Of Gods | ➤ Sisters Of Mercy |

RESIDENTIAL

QDI have completed a wide range of projects from luxury apartments to one off prestige houses. We are specialists in the design and installation of heating, plumbing, ventilation and building management systems.

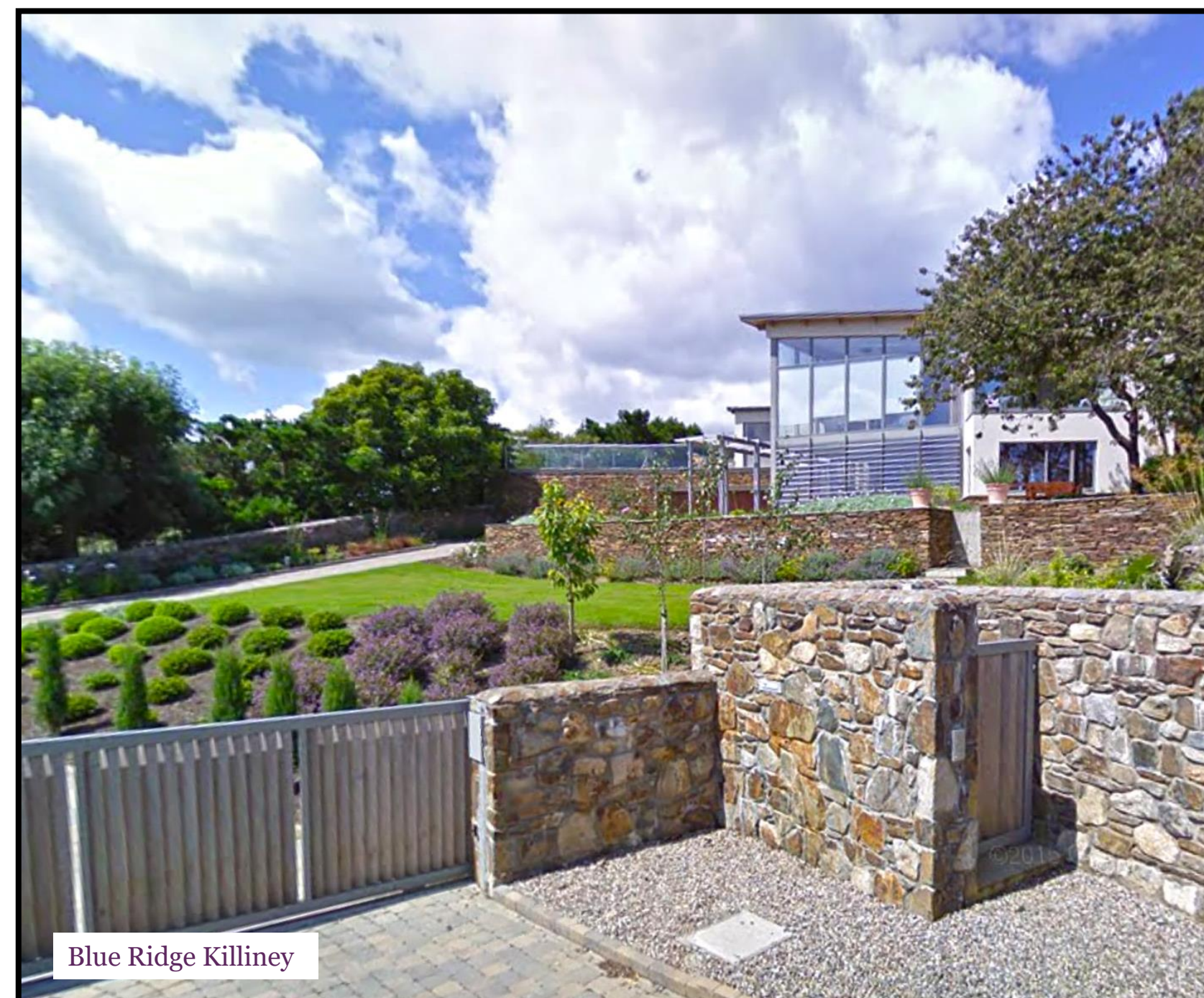
Together with our Service & Maintenance Division, we are able to provide all round service from design, install, commissioning, facilities management and 24 hour, 7 days a week, 365 days a year maintenance.



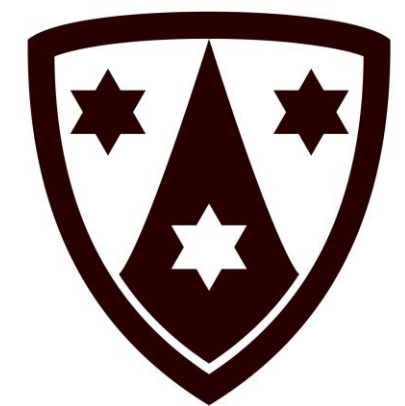
Tallaght Cross West Apartments



- Mitchell House Apartments
- Abington House, Co. Dublin
- Temple Hill Apartment Complex
- Marlborough St. Apartments, Dublin
- Private House, Killiney, Co. Dublin
- 50 Abington, Co. Dublin



- NZEB
- Centralised Energy Centre
- District Heating
- Heat Interface Units
- Renewable Energy
- Air to Air Heat Recovery Ventilation



Order of
Carmelites



O'Callaghan
Hotels

AerArann

Baxter



Stephen's Green
SHOPPING CENTRE

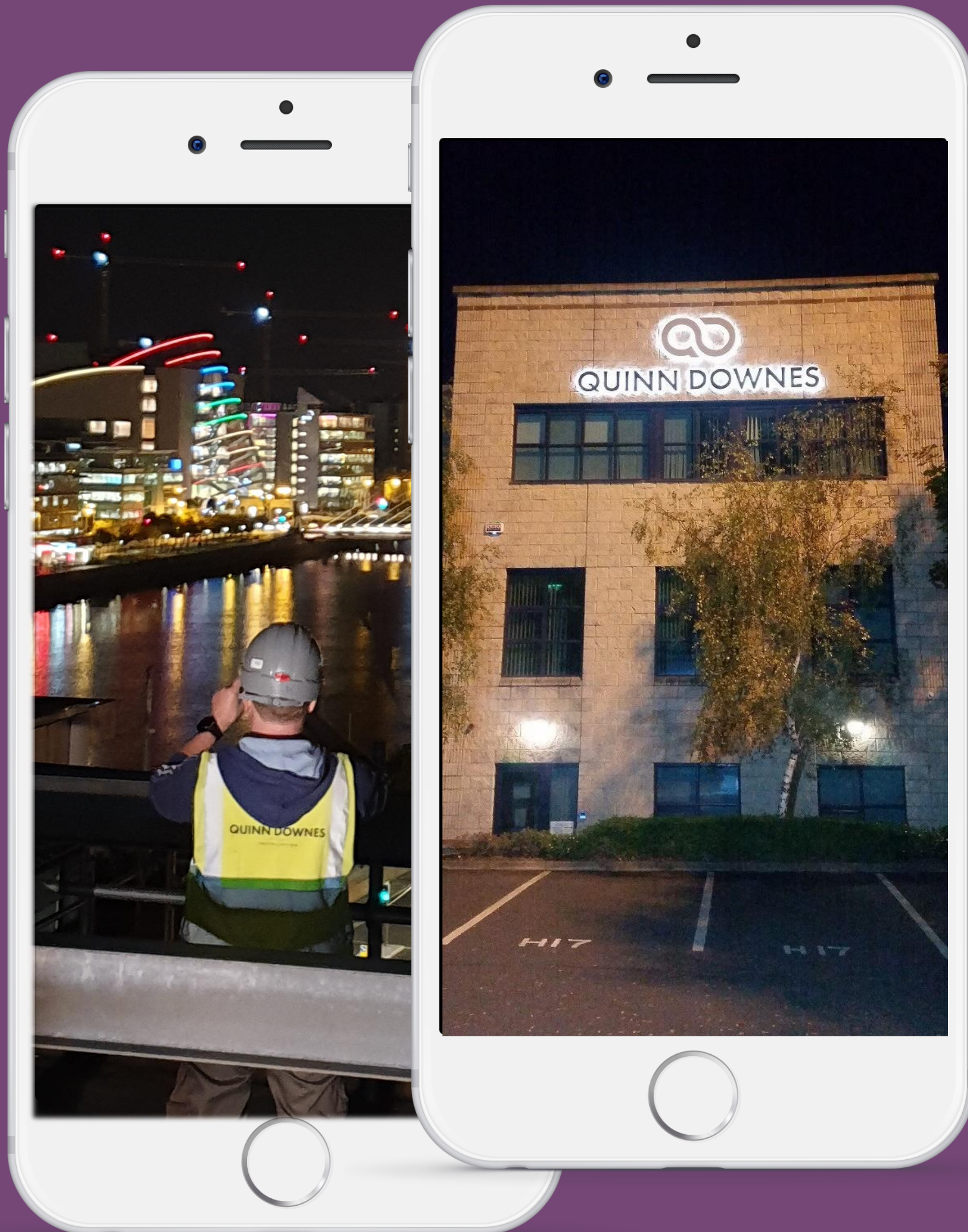


Irish Life

GALLERY







Contact Us

Unit H17
Centrepont Business Park,
Oak Rd,
Dublin 12

Phone (01) 424 3300
Emergency 0818 25 22 88

Email: info@quinndownes.com

Web: www.quinndownes.com



<https://ie.linkedin.com/company/quinn-downes>